

# SELECT<sup>®</sup> HIGH EFFICIENCY

## High Efficiency Residential Gas Water Heaters



**Series 300/301**

### Intelligent Control Logic

The internal microprocessor provides enhanced operating parameters and tighter differentials for precise sensing and faster heating response to optimize performance.

### Self-powered Electronic Gas Valve

Uses a thermopile to generate the power needed to operate the electronic gas control without requiring an external power source.

### Diagnostics

The electronic gas control incorporates an LED status indicator that monitors system operation & service diagnostics.

### "Environmentally-Friendly" Non-CFC Foam Insulation

2 Inch thick Non-CFC free foam insulation, external Silencer™ Heat Traps, and other energy-saving features improve efficiency.

**Diffuser Dip Tube** - Helps reduce lime and sediment buildup, maximize hot water output. Made of State PEXAN™, a cross-linked PEX polymer that can withstand long-term exposure to water temperatures up to 400° F a cross-linked polymer.

**Green Choice<sup>®</sup> Eco-Friendly Gas Burner** - Patented Low NOx burner reduces emissions by up to 33% and complies with less than 40 ng/j requirements for Low NOx emissions.

**Easy-To-Light Piezo Ignitor** - For fast "one-hand" pilot ignition.

**Durable, Brass Tamper-Resistant Drain Valve**

**Glasslined Tank** - For long-lasting protection against corrosion.

**Aluminum Anode Rod** - Helps protect against corrosion and maximizes tank life.

**CSA Certified and ASME Rated T&P Relief Valve** - Top-mounted T&P Relief Valve available as option on all models.

**FVIR Compliant Gas Water Heater Design** - See other side.

**6-Year Limited Tank and Parts Warranty**

### CODE COMPLIANCE

Meets UBC, CEC, SBCC, HUD and BOCA National Codes. Meets the thermal efficiency and standby loss requirements of the U.S. Department of Energy and current edition of ASHRAE/IESNA 90.1 and meets the Federal Energy Efficiency Standards effective January 20, 2004, according to the National Appliance Energy Conservation Act (NAECA) of 1992.



For more information on Select<sup>®</sup> contact:  
State Water Heaters  
500 Tennessee Waltz Parkway, Ashland City, TN 37015  
800-365-0024 Toll-free USA  
www.statewaterheaters.com

SRGSS04111 April 2011R

**SOLID.STATE.**



# SELECT<sup>®</sup> HIGH EFFICIENCY



## High Efficiency Residential Gas Water Heaters Series 300/301

MODEL NUMBER	Series	FIRST HOUR RATING GALLONS	ENERGY FACTOR	GALLON CAPACITY	BTU INPUT PER HOUR NATURAL †	RECOVERY 90°F RISE GALLONS PER HOUR	FOA THICKNESS (INCHES)	DIMENSIONS IN INCHES						DRAFT HOOD OUTLET	APPROXIMATE SHIPPING WEIGHT (LBS)
								A	B	C	D	E	F		
<b>TALL MODELS</b>															
GS6 30 YOCT	300/301	67	.62	30	35,500	36	2	61-1/2	58	18	13	8	52	3 or 4	126
GS6 40 YOCT	300/301	70	.62	40	40,000	41	2	61-3/4	58-1/4	20	13	8	51-3/4	3 or 4	150
GS6 50 YOCT	300/301	88	.62	50	40,000	41	2	61	57-1/4	22	13	8	50-1/4	3 or 4	165
<b>SHORT MODEL</b>															
GS6 40 YOCS	300/301	66	.62	40	40,000	41	2	51-1/2	47-3/4	22	13	8	41	3 or 4	147

Recoveries are rounded to nearest gallon

Water Connections – 3/4" on all models

† Propane Gas - 37,000 BTU Input for 50-gallon model & 36,000 for 40-gallon model and 32,000 for 30-gallon model

External heat trap nipples are factory-installed on all models

For 10-Year Tank and 6-Year Parts Warranty, change "6" to "X" in Model Number (GSX 40 YOCT)

When ordering Propane, change "Y" to "H" in model number (GS6 40 HOCT)

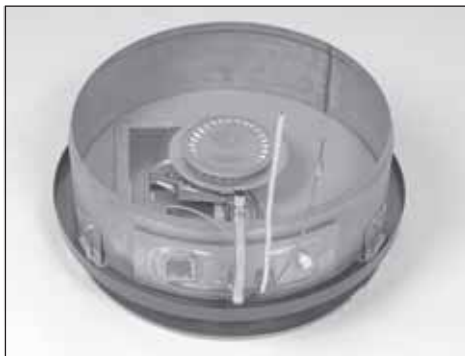
When ordering top-mounted T&P Valve, add "G" to model number (GS6 40 YOCT G)

Propane (LP) models are Series 201

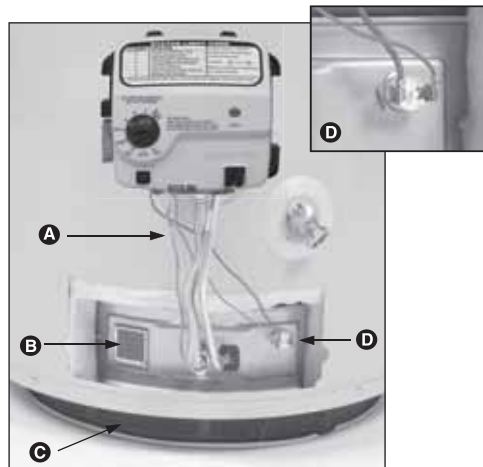
### Flammable Vapor Ignition Resistant (FVIR) Compliant Water Heaters

State FVIR design meets or exceeds the American National Standards Institute standards (ANSI Z21.10.1-CSA 4.1) that deal with the accidental or unintended ignition of flammable vapors, such as those emitted by gasoline.

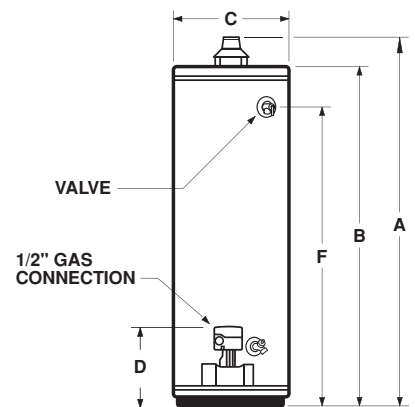
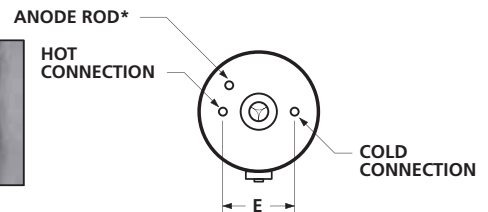
Feature a sealed combustion chamber with air intake filter and a flame arrestor built into the water heater base. In addition, a thermal cutoff (TCO) device, is designed to shut off gas flow to the burner and pilot if poor combustion is detected.



If flammable vapors accidentally enter the combustion chamber, the arrestor is designed so flames burn off the top surface and can not escape down through the arrestor.



- A. Industry standard thermopile
- B. Large View Port for easy burner inspection
- C. 360° combustion air filter
- D. Thermal Cutoff (TCO) with manual reset



\*Location for optional top-mounted T&P Valve if ordered from factory.

Maximum Hydrostatic Working Pressure: 150 PSI.

For complete information on limited warranties, consult written warranty, or contact the State Customer Care Center, 1-800-365-0024.

State Industries, Inc. reserves the right to make product changes or improvements without prior notice.

For more information on Select<sup>®</sup> contact:  
 State Water Heaters  
 500 Tennessee Waltz Parkway, Ashland City, TN 37015  
**800-365-0024 Toll-free USA**  
[www.statewaterheaters.com](http://www.statewaterheaters.com)

SRGSS04111 April 2011R

**SOLID.STATE.**

©2011 State Water Heaters

