



# ULTRA-LOW NO<sub>x</sub> POCKET GUIDE

Residential & Commercial



## SOLID. STATE.

When it comes to building durability into a product, nobody does it like State. In fact, we've tested our water heaters in some of the most hostile environments and under the toughest conditions to make sure they last longer and provide many more years of hot water.

[StateWaterHeaters.com](http://StateWaterHeaters.com)



Due to air quality regulations in some states, an increasing number of US residents are required to use water heaters that comply with Ultra-Low NO<sub>x</sub> (ULN) emissions. Distributors and installers in these states/Air Districts can only sell and install products that comply with the specified Ultra-Low NO<sub>x</sub> requirements.

State Water Heaters is committed to being your ultimate water heating partner. That means finding an innovative solution to even the most unique water heating applications, regardless of fuel type, technology or location. For our natural gas water heaters, this means providing a diverse line up of products that meet Ultra-Low NO<sub>x</sub> requirements.

#### Typical Ultra-Low NO<sub>x</sub> Water Heater Emission Levels:

ULN regulations typically limit nitrogen oxide (NO<sub>x</sub>) emissions from natural gas residential water heaters with input ratings of less than 75,000 Btu/hr to a maximum of 10 nanograms per joule or 15 parts per million. For mobile home water heaters, the NO<sub>x</sub> emission limit must not be higher than 40 nanograms per joule or 55 parts per million. The commercial limits vary by heater input but most heaters fall under the 14 nanograms per joule or 20 parts per million limit for inputs over 75,000 Btu/H and less than 2,000,000 Btu/h. Exact requirements vary by area, so always verify local requirements if you are not sure.





ProLine®

COMMERCIAL GRADE

## Introducing the ProLine® Family of Commercial-Grade Residential Water Heaters



ProLine® XE  
Premier®

ProLine® Master

ProLine®

---

When it comes to building a tough commercial-grade water heater, the keys to success are outstanding components and superior manufacturing capabilities. We've combined these two important elements to create the ProLine® family of commercial-grade residential water heaters. This wholesale-channel exclusive will give State Water Heaters' contractors the ultimate advantage.

---

# WHY PROFESSIONALS CHOOSE STATE



With over  
1,000,000  
merchandise  
items, your  
reward choices  
are endless.

## EARN POINTS BY PURCHASING STATE WATER HEATERS.

IT'S FREE AND EASY TO PARTICIPATE. Enroll online at [contractorrewards.com](http://contractorrewards.com).

Eligible products will have a yellow reward code label worth valuable points.

Two ways to enter the codes:

1. Download the smartphone app and scan the code.
2. Enter the code at [contractorrewards.com](http://contractorrewards.com).

Redeem your points on thousands of reward items.

## STATE PROVIDES 6 KEY THINGS TO HELP GROW YOUR BUSINESS AND BECOME MORE PROFITABLE.

### 1. CONTRACTOR LOCATOR

A new online locator that drives thousands of consumers from our websites right to our loyal contractors.

### 2. CONTRACTOR ADVERTISING TOOLS

Our Advertising Resource Center ([www.statewaterheaters.com/ads](http://www.statewaterheaters.com/ads)) allows contractors to develop an easy, affordable and custom advertising campaign to promote their business.

### 3. BREADTH OF PRODUCT LINE

Residential or commercial, we have the most complete line from standard models to the most innovative high efficiency water heaters available.

### 4. PRODUCT SALES TOOLS

We provide contractors access to the sales tools needed to close more sales.

### 5. CONTRACTOR REWARDS™ PROGRAM

Our program rewards our loyal contractors for buying our products. Buy more and get rewarded with prizes and higher status on our contractor locator.

### 6. BRAND SUPPORT

Marketing investment in our brand drives consumers to recognize our name, visit our website, locate local contractors and request our products.

\*To be listed on the Contractor Locator you must meet the minimum threshold of codes entered at [ContractorRewards.com](http://ContractorRewards.com)



**CONTRACTOR  
REWARDS.COM**  
Your Business. Your Choices. Your Rewards.

To learn more visit: [statewaterheaters.com/contractorlocator](http://statewaterheaters.com/contractorlocator)

# STATE WATER HEATERS

## PREMIUM FEATURES. COMMERCIAL-GRADE RESIDENTIAL WATER HEATERS.



**PROLINE®  
GOOD**

**PROLINE® MASTER  
BETTER**

**PROLINE® XE  
BEST**

OPERATING COST	\$\$\$	\$\$	\$
INSTALLATION SPACE REQUIRED	■ to ■■	■■	■ to ■■■
WARRANTY COVERAGE (YEARS)	6	8	6-15

### PREMIUM FEATURES:

Blue Diamond® Glass Coating**	●	●	●
Self-Cleaning Automatic Sediment-Cleaning System**	●	●	●
Self-Powered Electronic Gas Valve*	●	●	●
Heat Trap Nipples**	●	●	●
Enhanced Flow Brass Drain Valve**	●	●	●
CoreGard™ Advanced Anode Rod Protection**	●	●●	●●
Energy Saving	Meets Requirement	Meets Requirement	●
Electronic User Interface			●
Condensing Combustion*			●
Continuous Flow*			●
Cutting-Edge Technology Industry-Leading Efficiency			●

\* These features apply to gas products only

\*\* These features apply to tank-type products only

Hot Water Output, Cost of Operation, & Installation Space Required estimated based on typical applications/installations. For a more custom analysis of unique installations, visit [statewaterheaters.com](http://statewaterheaters.com) and use our product selector tool.



# WHAT GOES INTO MAKING STATE BRAND PRODUCTS LAST

**Blue Diamond® Glass Coating**  
State residential gas and electric water heaters have the toughest protection against corrosion to maximize tank life.

State's Blue Diamond® Glass Coating provides superior corrosion resistance compared to the industry-standard glass lining.



## Self-Cleaning Systems on State Residential Models

Automatic self-cleaning action greatly reduces lime and sediment buildup, maximizes hot water output. Made from long-lasting Pex cross-linked polymer.

Our ProLine® XE models come standard with maximum sediment-fighting power and utilize our top-of-the-line Turbo Coil design.



**Heat Trap Nipples**  
Factory-installed for faster installation on most State residential models.



## CoreGard™ Anode Rod

Our anode rods have a stainless steel core that extends the life of the anode rod, allowing superior tank protection far longer than standard anode rods.



**Enhanced-Flow Brass Drain Valve**  
Our residential water heaters have a solid brass, tamper resistant, enhanced-flow, ball type drain valve.

- Uses a standard female hose fitting that allows for fast and easy draining during maintenance.
- Designed for easy operation, this valve includes an integral screwdriver slot that features a 1/4 turn (open/close) radius, which not only permits full straight-through water flow but also a quick and positive shut off.



**ENERGY STAR®**  
State Water Heaters offers a variety of models that are ENERGY STAR® qualified. Learn more at [www.energystar.gov](http://www.energystar.gov).



**Green Choice® Gas Burner**  
Patented eco-friendly burner design reduces NOx emissions by up to 33% and complies with Low-NOx emission requirements of less than 40 ng/J.



**LOW LEAD CONTENT**  
CSA low lead logo on a plumbing product signifies certification to California's AB1953 and Vermont's legislation Act 193 that limits the lead content in plumbing fixtures that come in contact with drinking water to a maximum of 0.25% lead.

# PREMIER® HIGH EFFICIENCY POWER DIRECT VENT

**PROLINE® XE**  
**BEST**



**GP6 75 YTPDT**



## HELICAL INTERNAL HEAT EXCHANGER

- Spiral heat exchanger keeps hot combustion gases in the tank longer to lengthen the heat transfer cycle

## POWER DIRECT VENT DESIGN

- Combined vertical and horizontal runs terminating through an outside wall. Vents using PVC, CPVC or ABS pipe.
  - 2" pipe, vents up to 45 equivalent feet
  - 3" pipe, vents up to 128 equivalent feet

## CONDENSING DESIGN

- 96% efficient condensing design
- Equipped with condensate drain tee

## SIDE-MOUNTED HOT AND COLD RECIRCULATING TAPS

- Allows the ProLine® XE to be installed as part of combination space heating/water heating applications

## ADVANCED ELECTRONIC CONTROL

- Large LCD Display
- Precise temperature control
- Advanced diagnostics

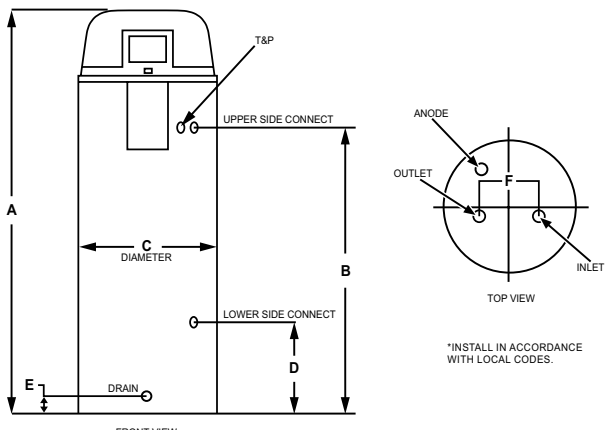
## CODE COMPLIANCE

- Complies with SCAQMD Rule 1146.2 and other air quality management districts with similar requirements for Ultra-Low NOx emissions requirements of 14 ng/J or 20ppm
- Meets UBC, CEC and ICC National Codes
- Meets the thermal efficiency and standby loss requirements of the U.S. Department of Energy and current edition of ASHRAE/IES 90.1

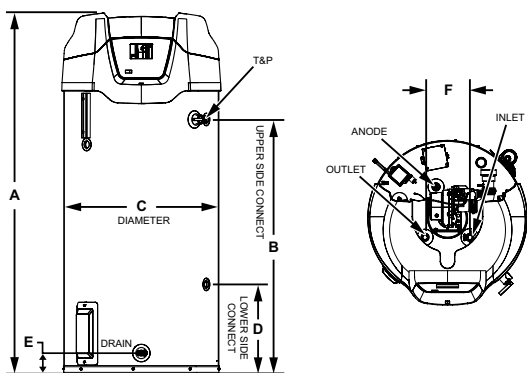
## 6-YEAR LIMITED TANK AND PARTS WARRANTY

- For complete information, consult written warranty or go to [statewaterheaters.com](http://statewaterheaters.com)

### ROUGH IN DIMENSIONS: 50 GALLON UNIT



### ROUGH IN DIMENSIONS: 75 GALLON UNIT



Model Number	Nominal Capacity	Rated Storage Volume	First Hour Rating (Gallons)	UEF	Thermal Efficiency	Recovery @ 90°F/50°C Rise Gallon Per Hour	BTU Input Per Hour	Vent Size
GP6 50 YTPDT	50	49	100	0.88	96%	129 (488)	100,000	2 or 3
GP6 50 YTPDT	75	74	130	0.86	96%	129 (488)	100,000	2 or 3

Model Number	Dimensions in Inches						Approx. Shipping Weight (lbs)
	A	B	C	D	E	F	
GP6 50 YTPDT	66-3/4	49-1/4	22	15-3/4	3	8	255
GP6 50 YTPDT	65-1/4	45-5/8	27-3/4	16	3-3/4	8	382

Available in Propane (LP) gas. Change "Y" to "H" in the model number (example: GP6 50 HTPDT).

Models certified from sea level to 10,100 ft. elevation.

Optional Condensate Neutralizer Kit available (Part Number 100112380).



# POLARIS™ HIGH EFFICIENCY

PROLINE® XE  
BEST



Low Lead Content



AHRF CERTIFIED®  
www.ahrfdirectory.org

## CONDENSING DESIGN

- Operates at up to 96% thermal efficiency which saves money on operating costs compared to a standard 80% efficient gas water heater
- Helical internal heat exchanger keeps hot combustion gases in the tank longer to extract more heat into the water

## STAINLESS STEEL CONSTRUCTION

- Tank and helical heat exchanger are constructed from 444 stainless steel for excellent corrosion resistance without the need for an anode

## WHISPER QUIET OPERATION

- Ultra-quiet blower and burner minimize noise

## POWER DIRECT VENT DESIGN

- Direct vent using PVC, CPVC or ABS either thru-the-wall or thru-the-roof

## OPTIONAL CONCENTRIC VENT KIT

## ADVANCED ELECTRONIC CONTROL

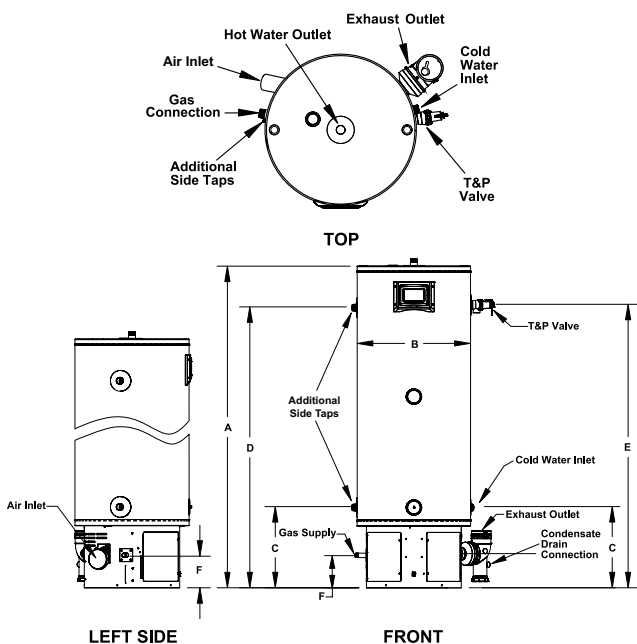
- Large LCD display provides precise temperature control and advanced diagnostics

## CODE COMPLIANCE

- Complies with SCAQMD Rule 1146.2 and other air quality management districts with similar requirements for Ultra-Low NOx emissions requirements of 14 ng/J or 20 PPM
- Meets UBC, CEC, and ICC National Codes
- Meets the thermal efficiency and standby loss requirements of the U. S. Department of Energy and current edition of ASHRAE/IES 90.1

## 10-YEAR LIMITED TANK AND 1-YEAR LIMITED PARTS WARRANTY

- For complete information, consult written warranty or go to [statewaterheaters.com](http://statewaterheaters.com)



Model Number	Nominal Capacity	Rated Storage Volume	First Hour Rating (Gallons)	UEF	Thermal Efficiency	Recovery @ 90° Rise Gallon Per Hour	BTU/h Input Gallon Per Hour	Approx. Shipping Weight (lbs)
GHX-34-100 N	34	33	170	0.90	96%	129	100,000	150
GHX-34-130 N	34	N/A	N/A	N/A	96%	165	130,000	150
GHX-34-150 N	34	N/A	N/A	N/A	94%	190	150,000	150
GHX-50-130 N	50	N/A	N/A	N/A	95%	165	130,000	176
GHX-50-150 N	50	N/A	N/A	N/A	95%	190	150,000	180
GHX-50-175 N	50	N/A	N/A	N/A	96%	222	175,000	180
GHX-50-199 N	50	N/A	N/A	N/A	96%	253	199,000	180

Model Number	Dimensions in Inches		Vent Connection	1" Water Connections		T&P	Gas Supply*	Approx. Shipping Weight (lbs)
	A	B		C	D			
GHX-34-100 N	48-1/2	22	2 or 3	15-3/4	40-1/2	41	6-3/8	150
GHX-34-130 N	48-1/2	22	2 or 3	15-3/4	40-1/2	41	6-3/8	150
GHX-34-150 N	48-1/2	22	2 or 3	15-3/4	40-1/2	41	6-3/8	150
GHX-50-130 N	62-3/8	22	2 or 3	15-3/4	54-1/2	55	6-3/8	176
GHX-50-150 N	63-3/4	22	2 or 3	15-3/4	55-3/4	56-1/4	6-3/8	180
GHX-50-175 N	63-3/4	22	3	15-3/4	55-3/4	56-1/4	6-3/8	180
GHX-50-199 N	63-3/4	22	3	15-3/4	55-3/4	56-1/4	6-3/8	180

For Propane (LP) gas change "N" to "P".  
Models certified for sea level to 7,700 ft. elevation.

# PROLINE® XE HIGH EFFICIENCY NON-CONDENSING ULTRA-LOW NOx FLUE DAMPER

**PROLINE® XE**  
**BEST**



## ENERGY STAR® EFFICIENCY

- Eco-friendly non-CFC foam insulation and an automatic flue damper increase efficiency to provide maximum household annual operating cost savings

## GREEN CHOICE® GAS BURNER

- Enhanced Ultra-Low NOx burner complies with SCAQMD Rule 1121 and other air quality management districts with similar requirements for NOx emissions of less than 10ng/J

## ELECTRONIC GAS CONTROL

## SELF-CLEANING DIP TUBE

## COREGARD™ ANODE ROD

## BLUE DIAMOND® GLASS COATING

## ENHANCED-FLOW BRASS DRAIN VALVE

## REQUIRES 120V POWER 19.5' CORD INCLUDED

## CODE COMPLIANCE

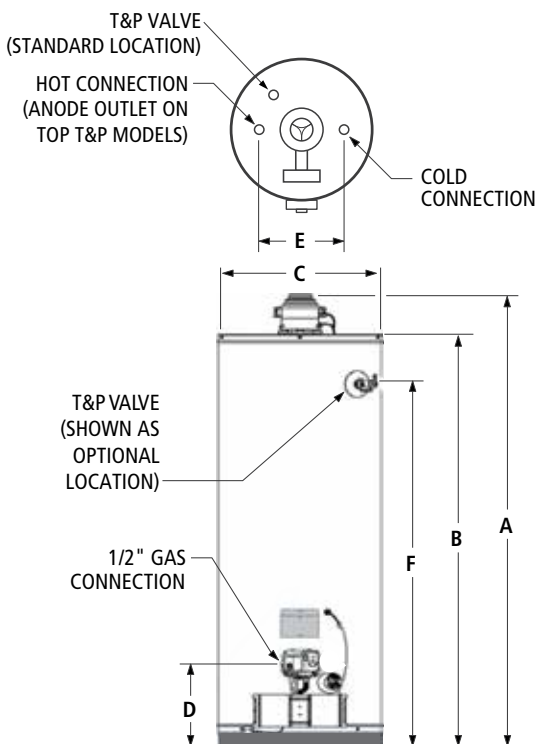
- Meets UBC, CEC and HUD (excluding mobile homes) National Codes
- Meets the thermal efficiency and standby loss requirements of the U.S. Department of Energy and current edition of ASHRAE/IES 90.1
- Complies with the Federal Energy Conservation Standards effective April 16, 2015, in accordance with the Energy Policy and Conservation Act, (EPCA), as amended

## CSA AND DESIGN-CERTIFIED BY CSA INTERNATIONAL

- Certified at 300 psi test pressure and 150 psi working pressure
- Listed according to ANSI Z21.10.1 - CSA 4.1 standards governing storage tank-type water heaters

## 6-YEAR LIMITED TANK AND PARTS WARRANTY

- For complete information, consult written warranty or go to [statewaterheaters.com](http://statewaterheaters.com)



Maximum Hydrostatic Working Pressure: 150 PSI.

Model Number	Nominal Capacity	Rated Storage Volume	First Hour Rating (Gallons)	UEF	BTU Input Natural Gas	Recovery @ 90F Rise (Gallon/Hour)	Approx. Shipping Weight
GS6-40-BFUT	40	38	68	0.65	40,000	42	152
GS6-50-BFUT	50	48	83	0.70	40,000	42	167

Model Number	Dimensions in Inches							
	Foam Thickness	A	B	C	D	E	F	Draft Hood Outlet
GS6-40-BFUT	2	64-1/4	58-1/4	20	13	8	51-3/4	3 or 4
GS6-50-BFUT	2	63-1/2	57-1/4	22	13	8	50-1/4	3 or 4

Requires 120VAC power supply located within 19ft of the heater.

Water connection is 3/4" on all models.

Standard top T&P, specify when ordering side T&P.

All models are certified from sea level to 7,800ft elevation.

# PROLINE® XE ULTRA-LOW NO<sub>x</sub> POWER VENT

PROLINE® XE  
BEST



## POWER VENTING MADE SIMPLE

- Thru-the-Wall or Thru-the-Roof power venting using either 2" or 3" PVC, ABS or CPVC vent pipe

## INTELLI-VENT™ GAS CONTROL

- Advanced electronics for more precise control of water temperature and easy to understand system diagnostics

## COMBINATION THERMOSTAT/ECO

- Utilizes an intermittent ignition gas valve (no standing pilot) with thermistor temperature sensor and built-in high temperature cut off

## QUIET AND EFFICIENT BLOWER

- Factory-installed 6-foot power cord with 3-prong male connector provided. Electrical requirements; 110/120 VAC power source, less than 5 amp draw.

## SELF-CLEANING DIP TUBE

- Helps reduce lime and sediment buildup and maximizes hot water output. Made from long-lasting PEX cross-linked polymer.

## COREGARD™ ANODE ROD

## GREEN CHOICE® GAS BURNER

- Complies with SCAQMD Rule 1121 and other air quality management districts with similar requirements for NO<sub>x</sub> emissions of less than 10 ng/J

## ENHANCED-FLOW BRASS DRAIN VALVE

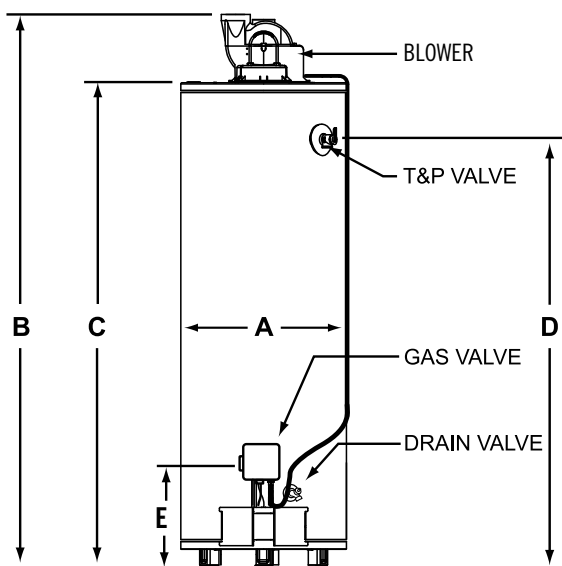
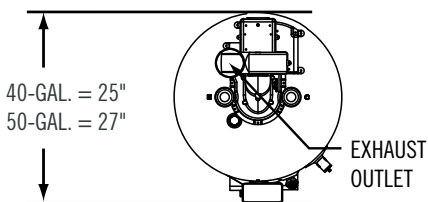
## CODE COMPLIANCE

- Meets UBC, CEC and HUD National Codes
- Meets the thermal efficiency and standby loss requirements of the U. S. Department of Energy and current edition of ASHRAE/IES 90.1
- Complies with the Federal Energy Conservation Standards effective April 16, 2015, in accordance with the Energy Policy Conservation Act (EPCA), as amended

## 6-YEAR LIMITED TANK AND PARTS WARRANTY

- For complete information, consult written warranty or go to [statewaterheaters.com](http://statewaterheaters.com)

## Top View



Model Number	Nominal Capacity	Rated Storage Volume	First Hour Rating (Gallons)	UEF	Recovery @ 90°F Rise Gallon Per Hour	BTU Input Gallon Per Hour	Approx. Shipping Weight (lbs)
GS6 40 UBKIT	40	38	76	0.70	42.6	42,000	170
GS6 50 UBKIT	50	48	71	0.65	42.6	42,000	207

Model Number	Dimensions in Inches					
	A	B	C	D	E	Draft Hood
GS6 40 UBKIT	20	66-7/8	58-5/8	51-1/2	12-1/4	2 or 3
GS6 50 UBKIT	22	66-8/8	57-7/16	51	12-1/4	2 or 3

No option available for top T&P valve.

# PROLINE® XE ULTRA-LOW NOX POWER DIRECT VENT

**PROLINE® XE  
BEST**



## POWER DIRECT VENT DESIGN

- Combined horizontal and vertical vent runs up to 180 equivalent feet with 4" diameter venting (ABS, PVC, CPVC and polypropylene)
- Two-pipe sealed combustion system uses outside air, eliminating problems caused by insufficient indoor ventilation
- Reduced NOx emissions comply with air quality management district regulations

## ENERGY STAR® QUALIFIED

- All models meet the ENERGY STAR® requirement and may also qualify for local utility and rebate programs
- "Environmentally-Friendly" foam insulation reduces the amount of heat loss and contributes to overall energy efficiency
- Built-in heat traps on the water inlet and outlet reduce the amount of heat lost through piping

## DYNACLEAN™ DIFFUSER DIP TUBE HOT-SURFACE IGNITOR BLUE DIAMOND® GLASS COATING USER-FRIENDLY

- State-of-the-art electronic gas control provides more precise temperature control
- LED control light displays operation status and diagnostics information

## ENHANCED-FLOW BRASS DRAIN VALVE CSA-CERTIFIED AND ASME-RATED T&P RELIEF VALVE DESIGN-CERTIFIED BY CSA INTERNATIONAL

- Certified at 150 psi working pressure
- Certified to ANSI Z21.10.1-CSA 4.1 or ANSI Z21.10.3-CSA 4.3 standards governing storage tank-type water heaters

## 6-YEAR LIMITED TANK AND PARTS WARRANTY

- For complete information, consult written warranty or go to [statewaterheaters.com](http://statewaterheaters.com)

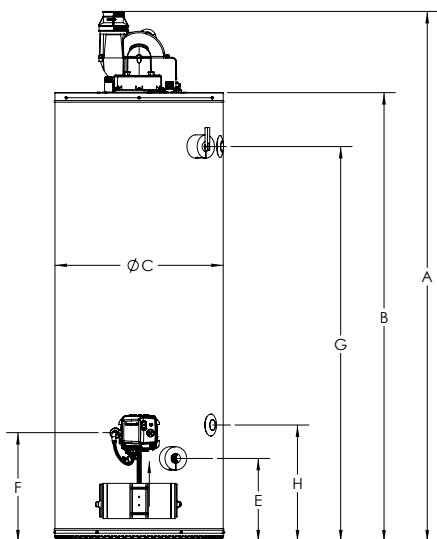
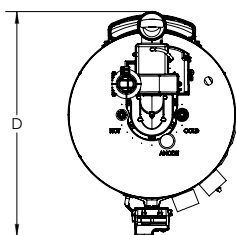


Low Lead Content



(Except  
GPDx 75L)





Model Number	Nominal Capacity	Rated Storage Volume	First Hour Rating (Gallons)	UEF	BTU Input Per Hour	Recovery @ 90°F Rise Gallon Per Hour	Approx. Shipping Weight (lb)
GS6-40-UBPDS	40	38	75	0.70	40,000	41	174
GS6-50-UBPDT	50	48	75	0.70	40,000	43	192

Model Number	Dimensions in Inches							
	A	B	C	D	E	F	G	H
GS6-40-UBPDS	58-1/4	49-5/8	22	29-7/8	11	13-1/4	42-1/2	15-1/4
GS6-50-UBPDT	67-1/2	58-3/4	22	29-7/8	11	13-1/4	51-3/4	15-1/4

Dimensions and specifications subject to change without notice in accordance with our policy of continuous product improvement.

All Dimensions shown in inches.

Top inlet and outlet are on 8" centers.

Operates on Natural Gas only.

All models rated for installation at altitudes up to 5,400 ft. Use high altitude kit for elevations to 10,100 ft.

For installations where the Ambient temperature is between 110 F° and 140 F° the High Ambient kit is required.



# PROLINE® MASTER ULTRA-LOW NOx

**PROLINE® MASTER**  
**BETTER**



**THE ELECTRONIC GAS CONTROL INCORPORATES AN LED STATUS INDICATOR THAT MONITORS SYSTEM OPERATION AND SERVICE DIAGNOSTICS**

**HIGH UNIFORM ENERGY FACTORS (UEFs)**

- Eco-friendly non-CFC foam insulation, heat traps and specially designed combustion chamber combine to produce a high UEF for maximum savings on operating costs.

**GREEN CHOICE® GAS BURNER**

- Enhanced Ultra-low NOx burner complies with SCAQMD Rule 1121 and other air quality management districts with similar requirements for NOx emissions of less than 10 ng/J

**SELF-CLEANING DIP TUBE**

**COREGARD™ ANODE ROD**

- ProLine® Master products have increased anode protection with either longer, or multiple anodes depending on model

**PUSH-BUTTON PIEZO IGNITOR**

**HEAT TRAP NIPPLES**

**BLUE DIAMOND® GLASS COATING**

- Blue Diamond® Glass Coating blend is formulated in the same lab that creates the protection for our industry-leading commercial product line

**ENHANCED-FLOW BRASS DRAIN VALVE**

**CODE COMPLIANCE**

- Meets UBC, CEC and HUD National Codes
- Meets the thermal efficiency and standby loss requirements of the U.S. Department of Energy and current edition of ASHRAE/IES 90.1
- Complies with the Federal Energy Conservation Standards effective April 16, 2015, in accordance with the Energy Policy Conservation Act (EPCA), as amended

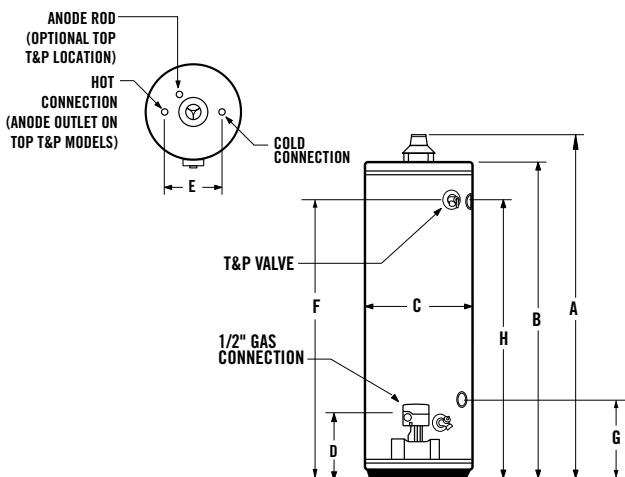
**DESIGN-CERTIFIED BY CSA INTERNATIONAL**

- Certified at 300 psi test pressure and 150 psi working pressure
- Listed according to ANSI Z21.10.1-CSA 4.1 standards governing storage tank-type gas water heaters

**8-YEAR LIMITED TANK AND PARTS WARRANTY**

- For complete information, consult written warranty or go to [statewaterheaters.com](http://statewaterheaters.com)





Maximum Hydrostatic Working Pressure: 150 PSI

Model Number	Nominal Capacity	Rated Storage Volume	First Hour Rating (Gallons)	UEF	BTU Input Natural Gas	Recovery @ 90°F Rise Gallon Per Hour	Approx. Shipping Weight (lbs)
<b>Tall Models</b>							
GW8 40 BRUT	40	38	83	0.64	40,000	41	125
GW8 40 BCUT	40	38	83	0.64	40,000	41	125
GW8 50 BRUT	50	48	84	0.61	40,000	42	148
GW8 50 BCUT	50	48	84	0.64	40,000	42	148
GW8 50 RCUTL*	50	48	91	0.60	50,000	51	177
<b>Short Models</b>							
GW8 40 BCUS	40	38	72	0.57	40,000	41	138

Model Number	Dimensions in Inches								Draft Hood
	A	B	C	D	E	F	G*	H*	
<b>Tall Models</b>									
GW8 40 BRUT	62	58-1/4	18	12	8	52	N/A	N/A	3 or 4
GW8 40 BCUT	62	58-1/4	20	12	8	52	N/A	N/A	3 or 4
GW8 50 BRUT	60-3/4	57-1/4	20	12	8	50-1/2	N/A	N/A	3 or 4
GW8 50 BCUT	60-3/4	57-1/4	22	12	8	50-1/2	N/A	N/A	3 or 4
GW8 50 RCUTL*	61	57-1/2	22	11 1/4	8	50-1/2	12-1/4	50-1/2	4
<b>Short Models</b>									
GW8 40 BCUS	51-1/2	47-3/4	22	12	8	41-1/4	N/A	N/A	3 or 4

All models may be ordered from the factory with top T&P valve as an option by adding "G" to the suffix of the model number (example GW8 40 BCUTG).

\*Side loop connections are standard on model GW8 50 RCUTL.

\*Most models approved for installation from sea level to 7,700 ft. elevation (except GW8 50 RCUTL, approved to 5,400 ft.).

# PROLINE® MOBILE HOME ATMOSPHERIC VENT



## COMPLIES WITH HUD STANDARDS FOR MANUFACTURED HOUSING INSTALLATION

### GAS CONTROL CONVERTIBLE FOR NATURAL AND PROPANE GAS

- For flexibility to meet the varying needs of manufactured housing installations

### SIDE-MOUNTED 3/4" COLD WATER INLET

- For ease of installation when cold water supply originates below the structure
- Top mounted 3/4" hot water outlet

### GREEN CHOICE® GAS BURNER

- Patented eco-friendly burner design reduces NOx emissions by up to 33% and complies with Low-NOx emission requirements of less than 40 ng/J

### COREGARD™ ANODE ROD

### BLUE DIAMOND® GLASS COATING

### ENHANCED-FLOW BRASS DRAIN VALVE

### CODE COMPLIANCE

- Meets UBC, CEC and HUD National Codes
- Meets the thermal efficiency and standby loss requirements of the U.S. Department of Energy and current edition of ASHRAE/IES 90.1
- Complies with the Federal Energy Conservation Standards effective April 16, 2015, in accordance with the Energy Policy and Conservation Act (EPCA), as amended

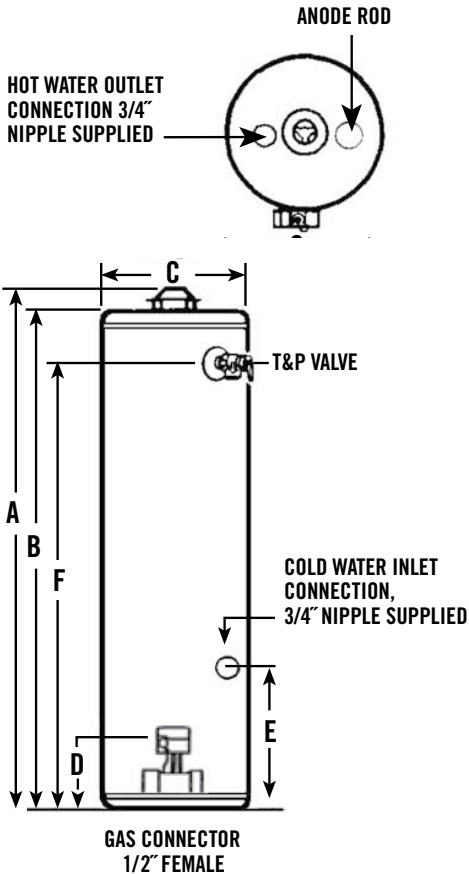
### DESIGN-CERTIFIED BY CSA INTERNATIONAL

- Certified at 300 psi test pressure and 150 psi working pressure
- Listed according to ANSI Z21.10.1-CSA4.1 standards governing storage tank-type gas water heaters

### CSA CERTIFIED AND ASME RATED T&P RELIEF VALVE

### 6-YEAR LIMITED TANK AND PARTS WARRANTY

- For complete information, consult written warranty or go to [statewaterheaters.com](http://statewaterheaters.com)



Model Number	Nominal Capacity	Rated Storage Volume	First Hour Rating (Gallons)	UEF	Recovery @ 90°F Rise Gallon Per Hour	Btu Input Per Hour Natural Gas	Btu Input Per Hour Propane	Approx. Shipping Weight (lbs)
GS6 30 MHG	30	29	63	0.61	36	35,500	32,000	129
GS6 40 MHG	40	38	59	0.58	36	35,500	32,000	153

Model Number	Dimensions in Inches						Draft Hood Outlet
	A	B	C	D	E	F	
GS6 30 MHG	61-1/2	58	18	13	14-1/4	52	3 or 4
GS6 40 MHG	61-3/4	58-1/4	20	13	14-1/4	51-3/4	3 or 4

All models ship from the factory for use with natural gas, a complete propane (LP) burner is supplied for converting to propane gas.

All models are certified from sea level to 10,100 ft. elevation.

No option available for top T&P.

# PROLINE® MOBILE HOME DIRECT VENT



## COMPLIES WITH HUD STANDARDS FOR MANUFACTURED HOUSING INSTALLATION

### GAS CONTROL CONVERTIBLE FOR NATURAL AND PROPANE GAS

- For flexibility to meet the varying needs of manufactured housing installations

### DIRECT VENT MODELS PACKAGE WITH BOTTOM INTAKE AIR VENT

- To draw all combustion make-up air from outside the structure

### OPTIONAL DUCTED AIR INLET KIT FOR DIRECT VENT MODELS

- For use when water heater is installed over a basement
- Provision for horizontal air inlet ducting

### SIDE-MOUNTED 3/4" COLD WATER INLET

### GREEN CHOICE® GAS BURNER

- Patented eco-friendly burner design reduces NOx emissions by up to 33% and complies with Low-NOx emission requirements of less than 40 ng/J

### SELF-CLEANING DIP TUBE

### COREGARD™ ANODE ROD

### ENHANCED-FLOW BRASS DRAIN VALVE

### BLUE DIAMOND® GLASS COATING

### CODE COMPLIANCE

- Meets UBC, CEC and HUD National Codes.
- Meets the thermal efficiency and standby loss requirements of the U.S. Department of Energy and current edition of ASHRAE/IES 90.1
- Complies with the Federal Energy Conservation Standards effective April 16, 2015, in accordance with the Energy Policy and Conservation Act (EPCA), as amended

### DESIGN-CERTIFIED BY CSA INTERNATIONAL

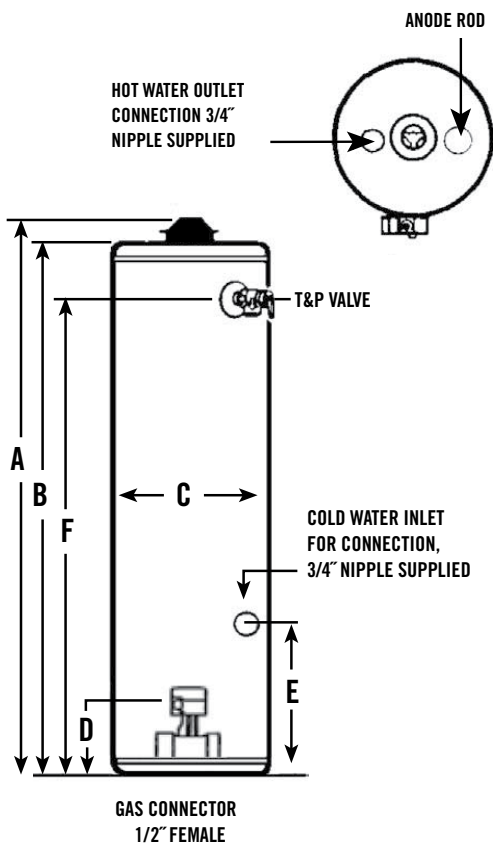
- Certified at 300 psi test pressure and 150 psi working pressure
- Listed according to ANSI Z21.10.1-CSA 4.1 standards governing storage tank-type gas water heaters

### CSA CERTIFIED AND ASME RATED T&P RELIEF VALVE

### 6-YEAR LIMITED TANK AND PARTS WARRANTY

- For complete information, consult written warranty or go to [statewaterheaters.com](http://statewaterheaters.com)





Model Number	Nominal Capacity	Rated Storage Volume	First Hour Rating (Gallons)	UEF	Btu Input Per Hour Natural Gas	Btu Input Per Hour Propane	Recovery @ 90°F Rise Gallon Per Hour	Approx. Shipping Weight (lbs)
GS6 30 MDV	30	29	60	0.61	30,000	29,000	31	129
GS6 40 MDV	40	38	57	0.59	32,000	29,000	33	153
GS6 50 MDV	50	47	67	0.56	40,000	37,000	39	168

Model Number	Dimensions in Inches						
	A	B	C	D	E	F	Vent Outlet
GS6 30 MDV	61	58	18	13	14-1/4	52-1/2	3
GS6 40 MDV	61-3/4	58-3/4	20	13	14-1/4	52-1/4	3
GS6 50 MDV	60	57	22	13	14-1/4	50	3

Certified from sea level to 5,400 ft. elevation.

No option available for top T&P.

All models ship from the factory for use with natural gas, a complete propane burner is supplied for converting to propane gas.

Water connection is 3/4" on all models..

# PROLINE® ULTRA-LOW NO<sub>x</sub>



**THE ELECTRONIC GAS CONTROL INCORPORATES AN LED STATUS INDICATOR THAT MONITORS SYSTEM OPERATION AND SERVICE DIAGNOSTICS**

**HIGH UNIFORM ENERGY FACTORS (UEFS)**

- Eco-friendly non-CFC foam insulation, heat traps and specially designed combustion chamber combine to produce a high UEF for maximum savings on operating costs

**GREEN CHOICE® GAS BURNER**

- Enhanced Ultra-low NO<sub>x</sub> burner complies with SCAQMD Rule 1121 and other air quality management districts with similar requirements for NO<sub>x</sub> emissions of less than 10 ng/J

**SELF-CLEANING DIP TUBE**

**COREGARD™ ANODE ROD**

**PUSH-BUTTON PIEZO IGNITOR**

**HEAT TRAP NIPPLES**

**BLUE DIAMOND® GLASS COATING**

**ENHANCED-FLOW BRASS DRAIN VALVE**

**CODE COMPLIANCE**

- Meets UBC, CEC and HUD National Codes
- Meets the thermal efficiency and standby loss requirements of the U.S. Department of Energy and current edition of ASHRAE/IES 90.1
- Complies with the Federal Energy Conservation Standards effective April 16, 2015, in accordance with the Energy Policy Conservation Act (EPCA), as amended

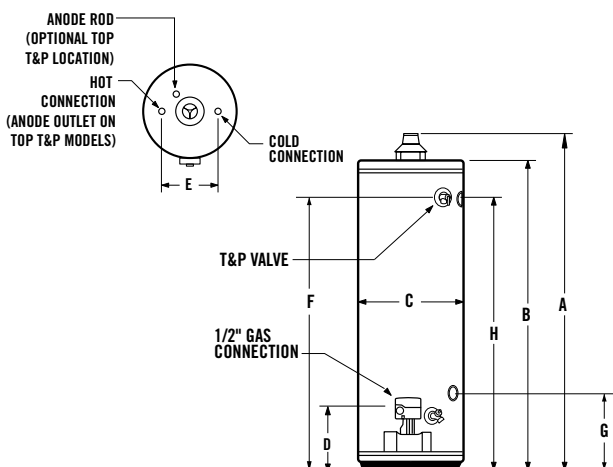
**DESIGN-CERTIFIED BY CSA INTERNATIONAL**

- Certified at 300 psi test pressure and 150 psi working pressure
- Listed according to ANSI Z21.10.1-CSA 4.1 standards governing storage tank-type gas water heaters

**6-YEAR LIMITED TANK AND PARTS WARRANTY**

- For complete information, consult written warranty or go to [statewaterheaters.com](http://statewaterheaters.com)





Maximum Hydrostatic Working Pressure: 150 PSI

Model Number	Nominal Capacity	Rated Storage Volume	First Hour Rating (Gallons)	UEF	BTU Input Natural Gas	Recovery @ 90°F Rise Gallon Per Hour	Approx. Shipping Weight (lbs)
<b>Tall Models</b>							
GS6 30 ORUT	30	29	62	0.59	33,000	34	126
GS6 40 BRUT	40	38	83	0.64	40,000	41	125
GS6 40 BCUT	40	38	83	0.64	40,000	41	125
GS6 50 BRUT	50	48	84	0.61	40,000	42	148
GS6 50 BCUT	50	48	84	0.64	40,000	42	148
GS6 50 RCUT*	50	48	91	0.60	50,000	51	177
<b>Short Models</b>							
GS6 40 BCUS	40	38	72	0.57	40,000	41	138

Model Number	Dimensions in Inches								Draft Hood
	A	B	C	D	E	F	G*	H*	
<b>TALL MODELS</b>									
GS6 30 ORUT	61-3/4	58	16	12	8	51-3/4	N/A	N/A	3 or 4
GS6 40 BRUT	62	58-1/4	18	12	8	52	N/A	N/A	3 or 4
GS6 40 BCUT	62	58-1/4	20	12	8	52	N/A	N/A	3 or 4
GS6 50 BRUT	60-3/4	57-1/4	20	12	8	50-1/2	N/A	N/A	3 or 4
GS6 50 BCUT	60-3/4	57-1/4	22	12	8	50-1/2	N/A	N/A	3 or 4
GS6 50 RCUT*	61	57-1/2	22	12-1/4	8	50-1/2	12-1/4	50-1/2	4
<b>SHORT MODELS</b>									
GS6 40 BCUS	51-1/2	47-3/4	22	12	8	41-1/4	N/A	N/A	3 or 4

All models may be ordered from the factory with top T&P valve as an option by adding "G" to the suffix of the model number (example GS6 30 ORUTG).

\*Side loop connections are standard on model GS6 50 RCUT.

Most models approved for installation from sea level to 7,700 ft. elevation (except GS6 50 RCUT, approved to 5,400 ft.).

For 10-year tank and 10-year parts limited warranty, change "6" to "X" in the model number (example: GSX 30 ORUT).



# PROLINE® ULTRA-LOW NO<sub>x</sub> DIRECT VENT



## FLAMMABLE VAPOR RESISTANT/DIRECT VENT SEALED COMBUSTION SYSTEM

## DURABLE, ULTRA-LOW NO<sub>x</sub> BURNER CONSTRUCTION

## NON-CFC FOAM INSULATION

- The tank is surrounded by a thick coat of non-CFC polyurethane foam to trap heat inside the tank, saving energy

## ¾" TOP WATER CONNECTIONS AND SIDE SPACE HEATING CONNECTIONS

## ½" GAS CONNECTION

## COREGARD™ ANODE ROD

## BLUE DIAMOND® GLASS COATING

## ENHANCED-FLOW BRASS DRAIN VALVE

## GREEN CHOICE® GAS BURNER

- Complies with SCAQMD Rule 1121 and other air quality management districts with similar requirements for NO<sub>x</sub> emissions of less than 10 ng/J

## CODE COMPLIANCE

- Meets UBC, CEC and HUD National Codes
- Meets the thermal efficiency and standby loss requirements of the U.S. Department of Energy and current edition of ASHRAE/IES 90.1
- Complies with the Federal Energy Conservation Standards effective April 16, 2015, in accordance with the Energy Policy and Conservation Act (EPCA), as amended

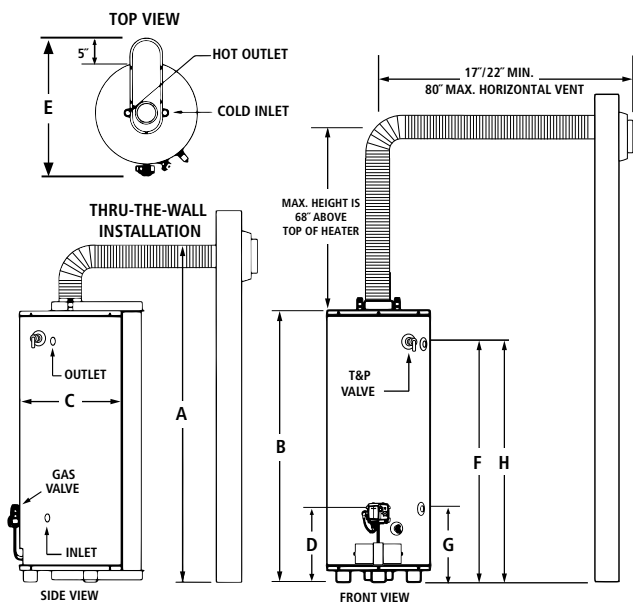
## DESIGN-LISTED BY CSA INTERNATIONAL

- Certified at 300 psi test pressure and 150 psi working pressure
- Listed according to ANSI Z21.10.1-CSA 4.1 standards governing storage tank-type gas water heaters

## CSA CERTIFIED AND ASME RATED T&P RELIEF VALVE

## 6-YEAR LIMITED TANK AND PARTS WARRANTY

- For complete information, consult written warranty or go to [statewaterheaters.com](http://statewaterheaters.com)



Model Number	Nominal Capacity	Rated Storage Volume	First Hour Rating (Gallons)	UEF	Recovery 90°F Rise Gallon Per Hour	BTU Input Per Hour	Approx. Shipping Weight (lbs)
GS6 40 UBDS L	40	28	52	0.60	39	36,000	179
GS6 50 UBDS L	50	48	76	0.65	41	38,000	193

Model Number	Dimensions in Inches								
	Concentric Vent Connection	A	B	C	D	E	F	G	H
GS6 40 UBDS L	3 or 5	65-1/4	50-1/2	22	13-1/2	30	43-7/8	15	45
GS6 50 UBDS L	3 or 5	58-1/2	73-1/2	22	13-1/2	30	52-1/4	15	53

No option available for top T&P valve.

All models have 3/4" top water connections and comes standard with side loop fittings.

All models are certified from sea level to 7,700 ft. elevation.

# PROLINE® ULTRA-LOW NO<sub>x</sub> HIGH CAPACITY



## FULLY AUTOMATIC CONTROLS WITH SAFETY SHUTOFF

## HEAVY GAUGE STEEL JACKET

## BLUE DIAMOND® GLASS COATING

## FOAM INSULATION

## ULTRA-LOW NO<sub>x</sub> EMISSIONS

- Complies with SCAQMD Rule 1146.2 and other Air Quality Management Districts with similar requirements of 14 ng/J or 20 ppm

## EASY-TO-INSTALL

- Completely factory-assembled. Only gas, water and vent connections need to be made. All connections are located in front and top of heaters for ease-of-installation and service.

## COREGARD™ ANODE ROD

- Our anode rods have a stainless steel core that extends the life of the anode rod, allowing superior tank protection far longer than standard anode rods

## MAXIMUM WORKING PRESSURE

- 150 psi.

## MAXIMUM GAS INLET PRESSURE

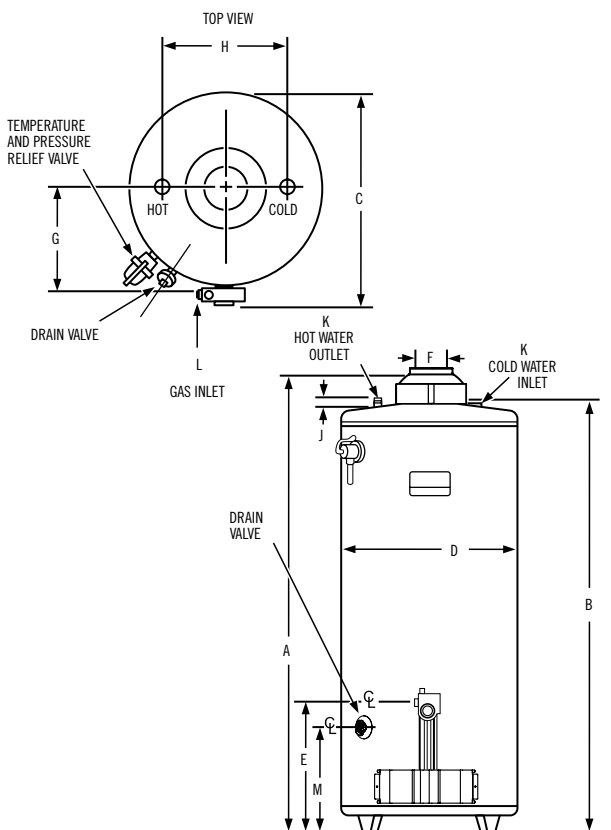
- 14" W.C.

## CODE COMPLIANCE

- Meets UBC, CEC and ICC National Codes
- The Ultra-Low NO<sub>x</sub> atmospheric vent residential gas water heater meets the thermal efficiency and standby loss requirements of the U.S. Department of Energy and Current Edition ASHRAE/IES 90.1

## 6-YEAR LIMITED TANK AND PARTS WARRANTY

- For complete information, consult written warranty or go to [statewaterheaters.com](http://statewaterheaters.com)



Model Number	Nominal Capacity	Rated Storage Volume	First Hour Rating (Gallons)	UEF	Recovery at 90°F Rise Gallon Per Hour	BTU Input Per Hour
†GS6-75-URRS	74	71	102	0.64	81	75,100
GS6-100-URRT	98	95	120	0.58	82	75,100

Model Number	Dimensions in Inches					
	A	B	C	D	E	F
†GS6-75-URRS	62-1/16	58	29-1/2	25-1/4	15-7/8	4
GS6-100-URRT	70-1/2	66-1/2	30-15/16	27-3/4	15-3/16	4

Model Number	Dimensions in Inches						Approx. Shipping Weight
	G	H	J	K	L	M	
†GS6-75-URRS	15-1/4	16	2	1	1/2	12-1/2	285 lbs
GS6-100-URRT	15-3/4	16	1-1/4	1-1/4	1/2	11-15/16	350 lbs

\*Recovery rating based on 81% thermal efficiency

\*\*Recovery rating based on 80% thermal efficiency

†The GS6-75-URRS comes standard with side loop fittings for use with hydronic heating applications

# PROLINE® XE CONDENSING WITH RECIRCULATION PUMP

PROLINE® XE  
BEST



Indoor



Outdoor



ANSI Z21. 10.3

CSA 4.3

## INTEGRATED RECIRCULATION PUMP

- Simplify installation by eliminating added time and money spend sourcing and installing pump and controls. Integrated front panel controls are easy to view and set.
- 1/2" pipe - 200'
- 3/4" pipe - 500'

## PUMP CONTROLS

- Included with heater
- Two timer settings
- Adjustable differential settings

## ENERGY STAR® QUALIFIED

## ULTRA-LOW NO<sub>x</sub> EMISSIONS

- Complies with SCAQMD 1146.2 NO<sub>x</sub> emission requirements of 14 ng/J or 20 PPM

## INDOOR MODELS

- Include integrated temperature and pump controls with advanced diagnostics that simplify installation and troubleshooting
- Factory-installed power cord

## OUTDOOR MODELS

- Includes a wall mount temperature remote controller and advanced diagnostics to simplify troubleshooting

## COMMON VENT INDOOR MODELS UP TO 8 HEATERS

- Easy-link with up to three 540H condensing tankless heaters to increase flow capacity

## SAFETY FEATURES

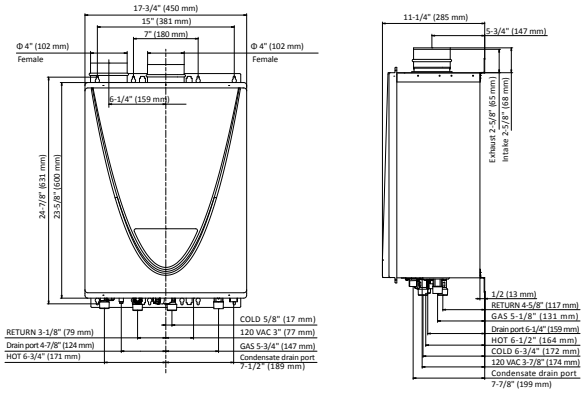
- Air-Fuel ratio (AFR) sensor
- Exhaust & water temperature safety control
- Overheat cut-off fuse

## INTERNAL FREEZE PROTECTION

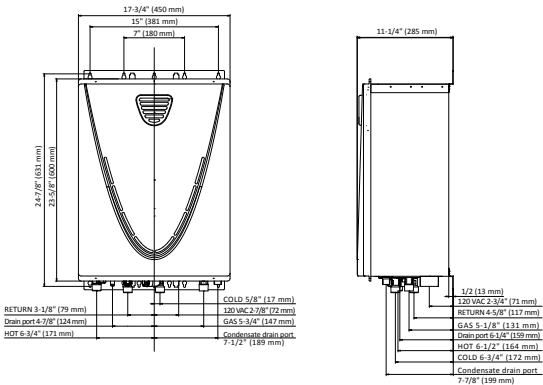
## WARRANTY

- 15-year limited warranty on heat exchanger in residential applications
- 5-year limited warranty on heat exchanger in commercial applications
- 5-year limited warranty on all parts
- For complete information, consult written warranty or go to [statewaterheaters.com](http://statewaterheaters.com)

## INDOOR MODEL



## OUTDOOR MODEL



Model Number*	Type	Gas Consumption Input		Inlet Gas Pressure***		Indoor Model UEF	Outdoor Model UEF	Approx Shipping Weight (lbs)
		Minimum** (BTU/H)	Maximum (BTU/H)	Minimum (in. W.C.)	Maximum (in. W.C.)			
GTS-540P-NIH	Natural	15,000	199,000	4.0	10.5	0.93	0.95	71

Model Number*	Connections		Sizing Chart (Number of Showers)		Clearances (in.)			
	Water	Gas	Cold Climate†	Warm Climate‡	Top	Bottom	Side	Front
GTS-540P-NIH	3/4" NPT	3/4" NPT	3	4.5	12	12	3	4

\* For outdoor models, change "NIH" to "NEH". For propane models, change "N" to "P".

\*\* For propane models, minimum is 13,000.

\*\*\* For propane models, minimum inlet gas pressure is 8.0 in. W.C. and maximum inlet gas pressure is 14.0 in. W.C.

† Cold climate represents 70°F temperature rise.

‡ Warm climate represents 50°F temperature rise.

# PROLINE® XE CONDENSING HIGH EFFICIENCY

PROLINE® XE  
BEST



Indoor



Outdoor



ANSI Z21. 10.3

CSA 4.3

## ENERGY STAR® QUALIFIED

## CONDENSING TECHNOLOGY PROVIDES UP TO 0.91 UEF

## ULTRA-LOW NO<sub>x</sub> EMISSIONS

- Complies with SCAQMD 1146.2 NO<sub>x</sub> emission requirements of 14 ng/J or 20 PPM

## COPPER PRIMARY HEAT EXCHANGER

- 25x better heat transfer than stainless steel thus stabilizing outgoing water temperature quicker and reducing pressure drop across the heat exchanger

## SECONDARY HEAT EXCHANGER

- Marine-Grade 316L stainless steel to protect against corrosion

## INDOOR MODELS

- Include a built-in temperature controller and advanced diagnostics to simplify troubleshooting
- Factory-installed power cord included

## OUTDOOR MODELS

- Include a wall mount temperature remote controller and advanced diagnostics to simplify troubleshooting

## ELECTRONIC IGNITION—NO PILOT LIGHT

## SAFETY FEATURES:

- Air Fuel Ratio (AFR) Sensor
- Exhaust and water temperature safety control
- Overheat cut-off fuse

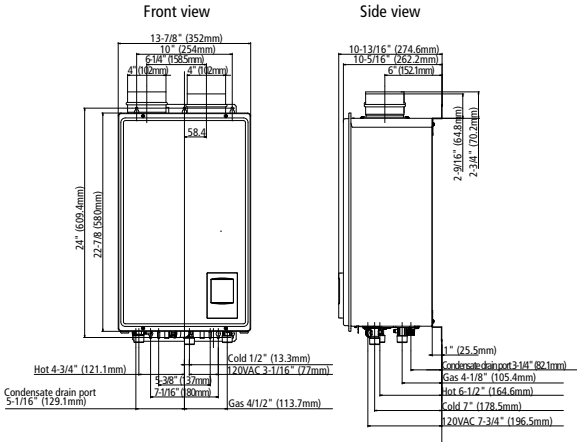
## INTERNAL FREEZE PROTECTION SYSTEM

## POWER VENT OR POWER DIRECT VENT DESIGN

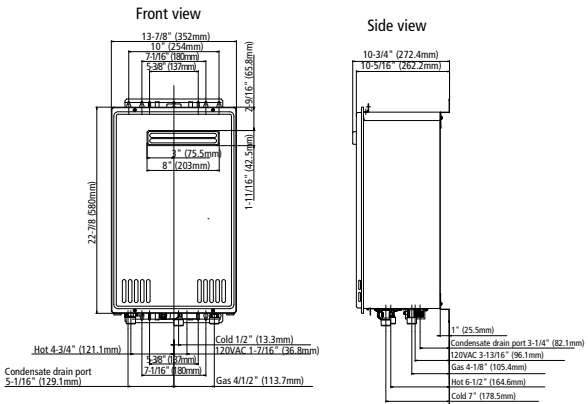
## WARRANTY

- 15-year limited warranty on heat exchanger in residential applications
- 5-year limited warranty on heat exchanger in commercial applications
- 5-year limited warranty on all parts
- For complete information, consult written warranty or go to [statewaterheaters.com](http://statewaterheaters.com)

## INDOOR MODEL



## OUTDOOR MODEL



Model Number*	Type	Gas Consumption Input		Inlet Gas Pressure***		Indoor Model UEF	Outdoor Model UEF
		Minimum** (BTU/H)	Maximum (BTU/H)	Minimum (in. W.C.)	Maximum (in. W.C.)		
GTS-140-NIH	Natural	15,000	120,000	4.0	10.5	0.90	0.91

Model Number*	Connections		Sizing Chart (Number of Showers)		Clearances (in.)				Approx Shipping Weight (lbs)
	Water	Gas	Cold Climate†	Warm Climate‡	Top	Bottom	Side	Front	
GTS-140-NIH	3/4" NPT	1/2" NPT	1.5	2.5	12	12	3	4	54

\*For outdoor models, change "NIH" to "NEH". For propane models, change "N" to "P".

\*\*For propane models, minimum is 13,000.

\*\*\*For propane models, minimum inlet gas pressure is 8.0 in. W.C. and maximum inlet gas pressure is 14.0 in. W.C.

† Cold climate represents 70°F temperature rise.

‡ Warm climate represents 50°F temperature rise.



# PROLINE® XE CONDENSING HIGH EFFICIENCY

PROLINE® XE  
BEST



Indoor



Outdoor



ANSI Z21. 10.3

CSA 4.3



(540H models only)

## ENERGY STAR® QUALIFIED

CONDENSING TECHNOLOGY PROVIDES UP TO  
0.95 UEF

## ULTRA-LOW NO<sub>x</sub> EMISSIONS

- Complies with SCAQMD Rule 1146.2 NO<sub>x</sub> emission requirements of 14 ng/J or 20 PPM

## MAXIMUM FLOW RATES UP TO 10.0 GPM HEAT EXCHANGER

- Primary heat exchanger of the GTS-540 is constructed of a commercial-grade copper that is more resilient to erosion. Copper is 25x better at heat transfer than stainless steel thus stabilizing outgoing water temperatures quicker and reducing pressure drop across the heat exchanger.
- Secondary heat exchanger is made of marine-grade 316L stainless steel to protect against corrosion

## INDOOR MODELS

- Include integrated temperature controls and advanced diagnostics to simplify troubleshooting
- Include factory-installed power cords

## OUTDOOR MODELS

- Include wall mount temperature remote controller and advanced diagnostics to simplify troubleshooting

## COMMON VENT INDOOR MODELS UP TO 8 UNITS

## 540H CAN BE USED IN BOTH RESIDENTIAL AND COMMERCIAL APPLICATIONS

- Easy-link up to 4 heaters
- Multi-link up to 20 heaters

## SAFETY FEATURES

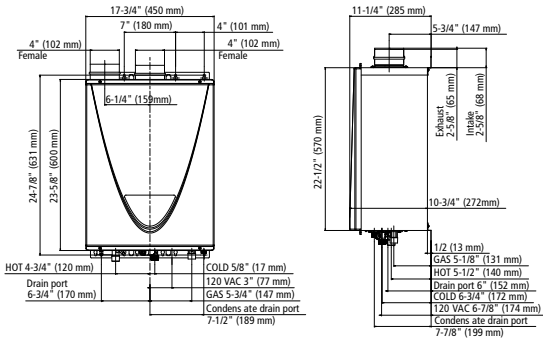
- Air-fuel Ratio (AFR) Sensor
- Exhaust and water temperature safety control
- Overheat cut-off fuse

## INTERNAL FREEZE PROTECTION SYSTEMS

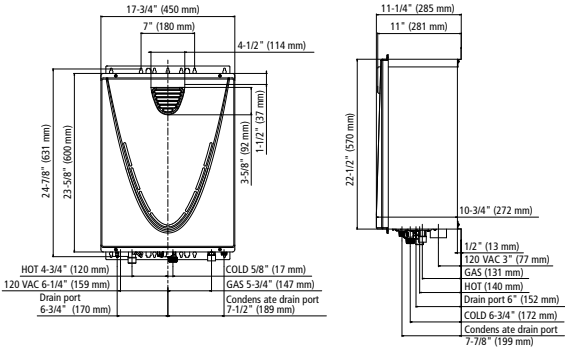
## POWER VENT OR POWER DIRECT VENT DESIGN WARRANTY

- 15-year limited warranty on heat exchanger in residential applications
- 5-year limited warranty on heat exchanger in commercial applications
- 5-year limited warranty on all parts
- For complete information, consult written warranty or go to [statewaterheaters.com](http://statewaterheaters.com)

## INDOOR MODEL



## OUTDOOR MODEL



Model Number*	Type	Gas Consumption Input		Inlet Gas Pressure***		Indoor Model UEF	Outdoor Model UEF	Approx Shipping Weight (lbs)
		Minimum** (BTU/H)	Maximum (BTU/H)	Minimum (in. W.C.)	Maximum (in. W.C.)			
GTS-240-NIH	Natural	15,000	160,000	4.0	10.5	0.94	0.95	71
GTS-340-NIH	Natural	15,000	180,000	4.0	10.5	0.95	0.94	71
GTS-540-NIH	Natural	15,000	199,000	4.0	10.5	0.93	0.95	71

Model Number*	Connections		Sizing Chart (Number of Showers)		Clearances (in.)				Approx Shipping Weight (lbs)
	Water	Gas	Cold Climate†	Warm Climate‡	Top	Bottom	Side	Front	
GTS-240-NIH	3/4" NPT	3/4" NPT	2.5	4	12	12	3	4	71
GTS-340-NIH	3/4" NPT	3/4" NPT	2.5	4	12	12	3	4	71
GTS-540-NIH	3/4" NPT	3/4" NPT	3	4.5	12	12	3	4	71

\*For outdoor models, change "NIH" to "NEH". For propane models, change "N" to "P".

\*\*For propane models, minimum is 13,000.

\*\*\*For propane models, minimum inlet gas pressure is 8.0 in. W.C. and maximum inlet gas pressure is 14.0 in. W.C.

† Cold climate represents 70°F temperature rise.

‡ Warm climate represents 50°F temperature rise.

# PROLINE® XE NON-CONDENSING CONCENTRIC VENT

PROLINE® XE  
BEST



Meets SCAQMD  
Rule 1146.2



ANSI Z21.10.3



(510c model only)

## CONCENTRIC VENT DESIGN

- Power direct vent
- Vertical or horizontal venting up to 43'

## FIELD CONVERTIBLE FROM NATURAL GAS TO PROPANE

## ULTRA-LOW NO<sub>x</sub> EMISSIONS

- Complies with SCAQMD Rule 1146.2 NO<sub>x</sub> emission requirements of 14 ng/J or 20 PPM

## MAXIMUM FLOW RATES UP TO 10.0 GPM

## PRIMARY HEAT EXCHANGER

- Primary heat exchanger of the GTS-510C is constructed of a commercial-grade copper that is more resilient to erosion. Copper is 25x better at heat transfer than stainless steel thus stabilizing outgoing water temperatures quicker and reducing pressure drop across the heat exchanger.

## INDOOR MODELS ONLY

- Include integrated temperature controls and advanced diagnostics to simplify troubleshooting
- Include factory-installed power cords

## GTS-510C CAN BE USED IN BOTH RESIDENTIAL AND COMMERCIAL APPLICATIONS

- Easy-Link up to 4 units
- Multi-Link up to 20 units

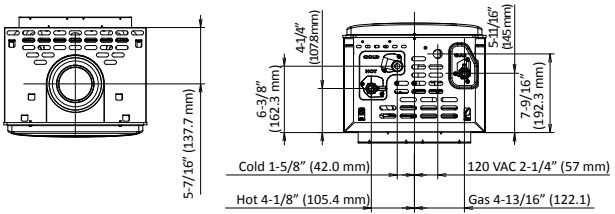
## SAFETY FEATURES

- Air-Fuel Ratio (AFT) sensor
- Water temperature safety control
- Overheat cut-off fuse

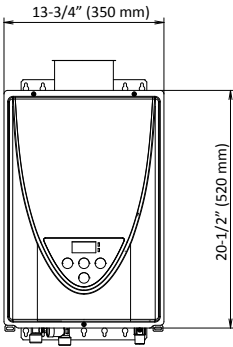
## INTERNAL FREEZE PROTECTION

## WARRANTY

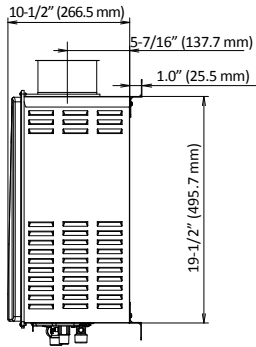
- 15-year limited warranty on heat exchanger in residential applications
- 5-year limited warranty on heat exchanger in commercial applications
- 5-year limited warranty on all parts
- For complete information, consult written warranty or go to [statewaterheaters.com](http://statewaterheaters.com)



**Top view**



**Front view**



**Side view**

Model Number*	Gas Consumption Input		Inlet Gas Pressure**		UEF	Connections	
	Minimum (BTU/H)	Maximum (BTU/H)	Minimum (in. W.C.)	Maximum (in. W.C.)		Water	Gas
GTS-110C-NI	15,000	140,000	4.0	10.5	0.81	3/4" NPT	3/4" NPT
GTS-310C-NI	15,000	190,000	4.0	10.5	0.81	3/4" NPT	3/4" NPT
GTS-510C-NI	15,000	199,000	4.0	10.5	0.81	3/4" NPT	3/4" NPT

Model Number*	Sizing Chart (Number of Showers)		Clearances (in.)				Approx. Shipping Weight (lbs.)
	Cold Climate†	Warm Climate‡	Top	Bottom	Side	Front	
GTS-110C-NI	1.5	2.5	12	12	3	4	55
GTS-310C-NI	2.5	3.5	12	12	3	4	55
GTS-510C-NI	2.5	3.5	12	12	3	4	55

\*Indoor models only. Units are field convertible from natural gas to propane with supplied conversion kit.

\*\*For propane models, minimum inlet gas pressure is 8.0 in. W.C. and maximum inlet gas pressure is 14.0 in. W.C.

† Cold climate represents 70°F temperature rise

‡ Warm climate represents 50°F temperature rise

# TANKLESS NON-CONDENSING ULTRA-LOW NO<sub>x</sub>



Indoor



Outdoor



(510U model only)



ANSI Z21. 10.3

## ULTRA-LOW NO<sub>x</sub> EMISSIONS

- Complies with SCAQMD Rule 1146.2 NO<sub>x</sub> emission requirements of 14 ng/J or 20 PPM

## FIELD CONVERTIBLE FROM NATURAL GAS TO PROPANE

## MAXIMUM FLOW RATES UP TO 10.0 GPM

## COPPER PRIMARY HEAT EXCHANGER

- Primary heat exchanger of the GTS-510U is constructed of a commercial-grade copper that is more resilient to erosion. Copper is 25x better at heat transfer than stainless steel thus stabilizing outgoing water temperatures quicker and reducing pressure drop across the heat exchanger.

## INDOOR MODELS

- Include integrated temperature controls and advanced diagnostics to simplify troubleshooting
- Include factory-installed power cords

## OUTDOOR MODELS

- Include a wall mount temperature remote controller and advanced diagnostics to simplify troubleshooting

## GTS-510U CAN BE USED IN BOTH RESIDENTIAL AND COMMERCIAL APPLICATIONS

- Easy-Link up to 4 units
- Multi-Link up to 20 units

## SAFETY FEATURES

- Air-Fuel Ratio (AFR) Sensor
- Exhaust and water temperature safety control
- Overheat cut-off fuse

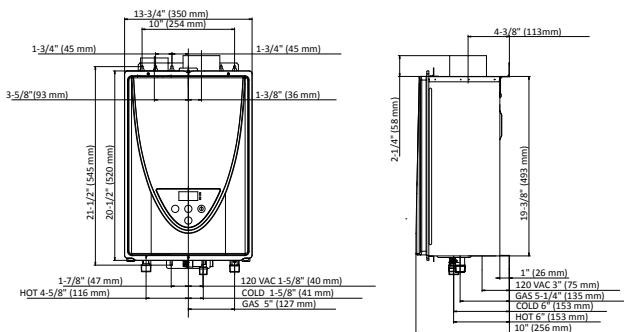
## INTERNAL FREEZE PROTECTION

## POWER VENT OR POWER DIRECT VENT DESIGN

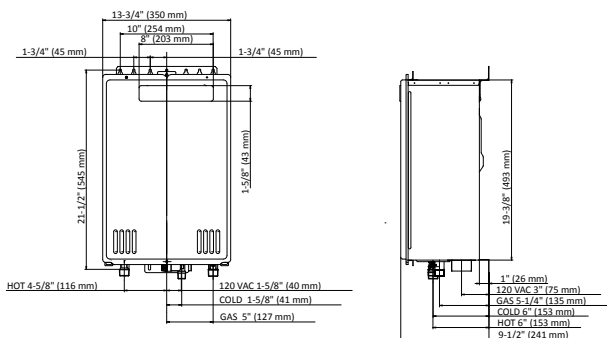
## WARRANTY

- 15-year limited warranty on heat exchanger in residential applications
- 5-year limited warranty on heat exchanger in commercial applications
- 5-year limited warranty on all parts
- For complete information, consult written warranty or go to [statewaterheaters.com](http://statewaterheaters.com)

## INDOOR MODEL



## OUTDOOR MODEL



Model Number*	Type	Gas Consumption Input		Inlet Gas Pressure**		Indoor Model UEF	Outdoor Model UEF	Connections	
		Minimum (BTU/H)	Maximum (BTU/H)	Minimum (in. W.C.)	Maximum (in. W.C.)			Water	Gas
GTS-110U-I	Natural	15,000	140,000	4.0	10.5	0.81	0.81	3/4" NPT	3/4" NPT
GTS-310U-I	Natural	15,000	190,000	4.0	10.5	0.81	0.81	3/4" NPT	3/4" NPT
GTS-510U-I	Natural	15,000	199,000	4.0	10.5	0.81	0.81	3/4" NPT	3/4" NPT

Model Number*	Sizing Chart (Number of Showers)		Clearances (in.)				Approx Shipping Weight (lbs)
	Cold Climate†	Warm Climate‡	Top	Bottom	Side	Front	
GTS-110U-I	1.5	2.5	12	12	3	4	39
GTS-310U-I	2.5	3.5	12	12	3	4	39
GTS-510U-I	2.5	3.5	12	12	3	4	40

\*For outdoor models, change "I" to "E". Units are field convertible from natural gas to propane with supplied conversion kit.

\*\*For propane, minimum inlet gas pressure is 8.0 in. W.C. and maximum inlet gas pressure is 14.0 in. W.C.

† Cold climate represents 70°F temperature rise.

‡ Warm climate represents 50°F temperature rise.

# COMMERCIAL CONDENSING HIGH EFFICIENCY

**PROLINE® XE**  
**BEST**



Indoor



Outdoor



ANSI Z21. 10.3

CSA 4.3



(540H models only)

## ENERGY STAR® QUALIFIED

**CONDENSING TECHNOLOGY PROVIDES UP TO 96% THERMAL EFFICIENCY AND 0.95 UEF**

## ULTRA-LOW NOX EMISSIONS

- Complies with SCAQMD 1146.2 NOx emission requirements of 14 ng/J or 20 PPM

## MAXIMUM FLOW RATES UP TO 10.0 GPM

## HEAT EXCHANGER

- Primary heat exchanger is constructed of a commercial-grade copper that is more resilient to erosion. Copper is 25x better at heat transfer than stainless steel thus stabilizing outgoing water temperature quicker and reducing pressure drop across the heat exchanger.
- Secondary heat exchanger is made of marine-grade 316L stainless steel to protect against corrosion

## INDOOR MODELS

- Include integrated temperature controls and advanced diagnostics to simplify troubleshooting
- Include factory-installed power cords

## OUTDOOR MODELS

- Include a wall mount temperature remote controller and advanced diagnostics to simplify troubleshooting

## MULTIPLE HEATERS CAN BE COMBINED FOR LARGER APPLICATIONS

- Easy-link up to 4 heaters
- Multi-link up to 20 heaters
- Common vent up to 8 indoor models

## SAFETY FEATURES

- Air-Fuel Ratio (AFR) Sensor
- Exhaust & Water Temperature Safety Control
- Overheat Cut-off Fuse

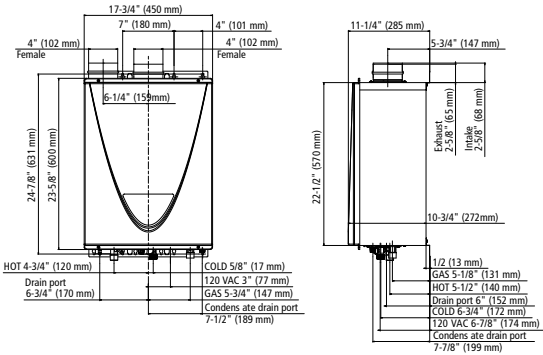
## INTERNAL FREEZE PROTECTION SYSTEM

## POWER VENT OR POWER DIRECT VENT DESIGN

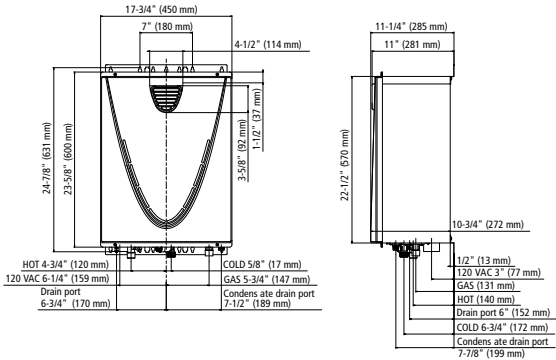
## WARRANTY

- 6-year limited warranty on heat exchanger in commercial applications
- 5-year limited warranty on all parts

## INDOOR MODEL



## OUTDOOR MODEL



Model Number*	Type	Gas Consumption Input		Inlet Gas Pressure***	
		Minimum** (BTU/H)	Maximum (BTU/H)	Minimum (in. W.C.)	Maximum (in. W.C.)
SCT-199I-N	Natural	15,000	199,000	4.0	10.5

Model Number*	Thermal Efficiency	Indoor Model UEF	Outdoor Model UEF	Connections		GPM @ 100°F Rise
				Water	Gas	
SCT-199I-N	96%	0.93	0.95	3/4" NPT	3/4" NPT	3.8

Model Number*	Clearances (in.)				Approx Shipping Weight (lbs)
	Top	Bottom	Side	Front	
SCT-199I-N	12	12	3	4	71

\*For outdoor models, change "199I" to "1990". For propane models, change "N" to "P"

\*\*For propane models, minimum is 13,000

\*\*\*For propane models, minimum inlet gas pressure is 8.0 in. W.C. and maximum inlet gas pressure is 14.0 in. W.C.



# TANKLESS COMMERCIAL RACK SYSTEM



**FREE-STANDING**

## **MULTIPLE DESIGN AND INSTALLATION CONFIGURATIONS**

- Wall mount, free standing in-line, and free standing back-to-back designs
- Indoor and outdoor rack designs
- Uses the 540 high efficiency condensing tankless heaters

## **EXPANDABLE**

- Up to 1,592,000 BTU on a single rack system
- Able to link up to 20 heaters together with Multi-Link system

## **REDUNDANCY**

- Multiple combustion systems provide piece of mind
- Easily isolate a unit for maintenance which extends the life of the heaters

## **LIGHTWEIGHT**

- Anodized aluminum frame
- Utilizes the industry's lightest 199,000 BTU high efficiency condensing tankless heater

## **EASY FIELD INSTALLATION**

- Reduce installation costs with three simple connections (cold water, hot water, and gas)
- Ultra-Low NOx Emissions
- Complies with SCAQMD Rule 1146.2 NOx emission requirements of 14 ng/J or 20 PPM

## **WARRANTY**

- 1-year limited warranty on rack parts
- For complete information, consult written warranty or go to [statewaterheaters.com](http://statewaterheaters.com)



**WALL MOUNT**



**BACK-TO-BACK**



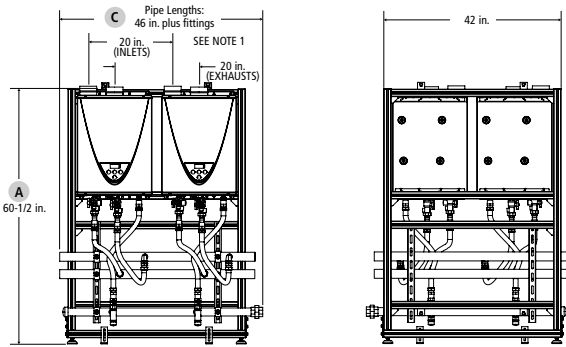
Model Number	Number of Heaters	Btuh Input		Max Flow (GPM)		
		Min	Max	@ 40°F Rise	@ 100°F Rise	@ 140°F Rise
<b>Free Standing</b>						
SCI-CRS-2IL-N	2	15,000	398,000	19	7.6	5.4
SCI-CRS-3IL-N	3	15,000	597,000	28.5	11.4	8.1
SCI-CRS-4IL-N	4	15,000	796,000	38	15.2	10.8
<b>Wall Mount</b>						
SCI-CRS-2WM-N	2	15,000	398,000	19	7.6	5.4
SCI-CRS-3WM-N	3	15,000	597,000	28.5	11.4	8.1
SCI-CRS-4WM-N	4	15,000	796,000	38	15.2	10.8
<b>Back-to-Back</b>						
SCI-CRS-4B2B-N	4	15,000	796,000	38.0	15.2	10.8
SCI-CRS-5B2B-N	5	15,000	995,000	47.5	19.0	13.5
SCI-CRS-6B2B-N	6	15,000	1,194,000	57.0	22.8	16.2
SCI-CRS-7B2B-N	7	15,000	1,393,000	66.5	26.6	18.9
SCI-CRS-8B2B-N	8	15,000	1,592,000	76.0	30.4	21.6

Model Number	Dimensions in Inches			Approx. Shipping Weight (lbs)
	A Height	B Depth	C Width	
<b>Free Standing</b>				
SCI-CRS-2IL-N	60-1/2	16	46	265
SCI-CRS-3IL-N	60-1/2	16	66	387
SCI-CRS-4IL-N	60-1/2	16	86	580
<b>Wall Mount</b>				
SCI-CRS-2WM-N	58-3/4	13	46	240
SCI-CRS-3WM-N	58-3/4	13	66	350
SCI-CRS-4WM-N	58-3/4	13	86	460
<b>Back-to-Back</b>				
SCI-CRS-4B2B-N	60-1/2	37-3/4	46	580
SCI-CRS-5B2B-N	60-1/2	37-3/4	66	741
SCI-CRS-6B2B-N	60-1/2	37-3/4	66	800
SCI-CRS-7B2B-N	60-1/2	37-3/4	85	961
SCI-CRS-8B2B-N	60-1/2	37-3/4	85	1020

# TANKLESS COMMERCIAL RACK SYSTEM

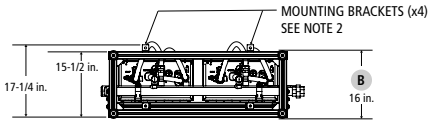
(CONTINUED)

## FREE-STANDING



Front

Back

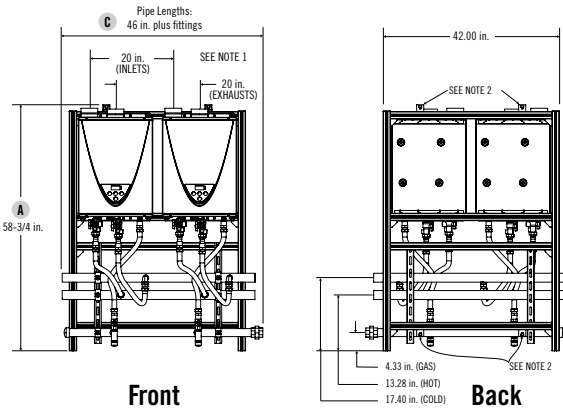


Bottom

NOTES:

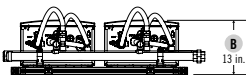
1. TOP-MOUNTED AIR SUPPLY INLET/EXHAUST VENT ARE USED WITH INDOOR MODELS ONLY.
2. MOUNTING BRACKETS ADJUST HORIZONTALLY ALONG CHANNEL SLOTS.
3. INDOOR AND OUTDOOR RACK SYSTEMS HAVE IDENTICAL DIMENSIONS. EXCEPTION: INDOOR MODELS HAVE TOP-MOUNTED INTAKES AND EXHAUSTS. OUTDOOR MODELS DO NOT.

## WALL MOUNT



Front

Back

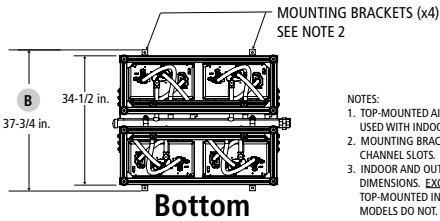
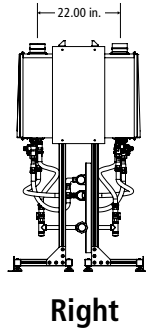
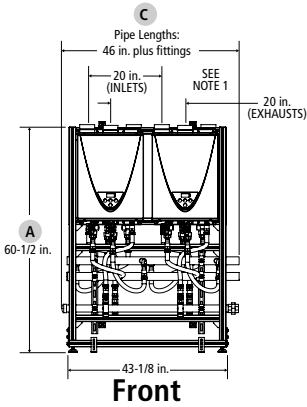


Bottom

NOTES:

1. TOP-MOUNTED AIR SUPPLY INLET/EXHAUST VENTS ARE USED WITH INDOOR MODELS ONLY.
2. MOUNTING BRACKETS ADJUST HORIZONTALLY ALONG CHANNEL SLOTS.
3. INDOOR AND OUTDOOR RACK SYSTEMS HAVE IDENTICAL DIMENSIONS. EXCEPTION: INDOOR MODELS HAVE TOP-MOUNTED INTAKES AND EXHAUSTS. OUTDOOR MODELS DO NOT.

## BACK-TO-BACK



**NOTES:**

1. TOP-MOUNTED AIR SUPPLY INLET/EXHAUST VENT ARE USED WITH INDOOR MODELS ONLY.
2. MOUNTING BRACKETS ADJUST HORIZONTALLY ALONG CHANNEL SLOTS.
3. INDOOR AND OUTDOOR RACK SYSTEMS HAVE IDENTICAL DIMENSIONS. **EXCEPTION:** INDOOR MODELS HAVE TOP-MOUNTED INTAKES AND EXHAUSTS. OUTDOOR MODELS DO NOT.

# FORCE® 90+ POWER DIRECT VENT



## CONDENSING DESIGN

- Operates at 96% thermal efficiency, which saves money on operating costs compared to a standard 80% efficient gas water heater
- Equipped with condensate drain tee

## HELICAL INTERNAL HEAT EXCHANGER

- Spiral heat exchanger keeps hot combustion gases in the tank longer lengthen the heat transfer cycle
- Positioned in the center of the tank for more even heat distribution

## POWER DIRECT VENT DESIGN

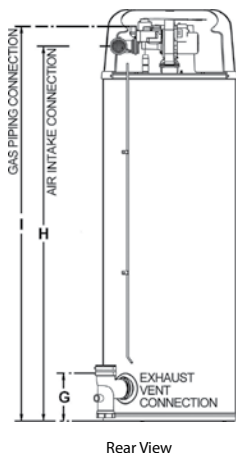
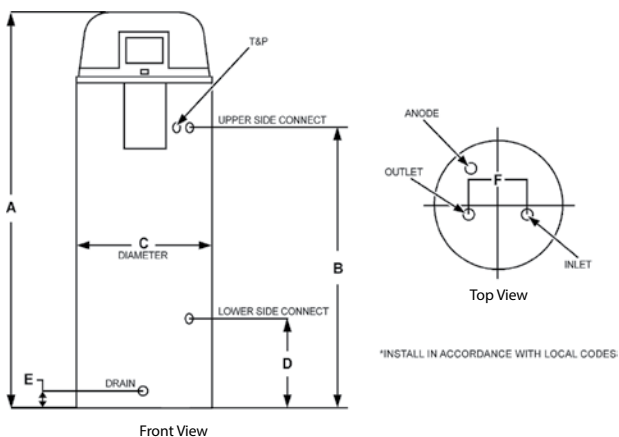
- Combined vertical and horizontal runs terminating through an outside wall. Vents using PVC, CPVC, ABS, or polypropylene.
- 2" pipe, vents up to 45 equivalent feet
- 3" pipe, vents up to 128 equivalent feet

## SIDE-MOUNTED HOT AND COLD RECIRCULATING TAPS

## 3-YEAR LIMITED TANK AND 1-YEAR LIMITED PARTS WARRANTY

- For complete information, consult written warranty or go to [statewaterheaters.com](http://statewaterheaters.com)





Model Number	Gallon Capacity	Recovery Capacity GPH @ 100°F Rise	BTU Input Per Hour	Approx. Shipping Weight (lbs)
SHE50 100NE	50	116	100,000	255

Model Number	Dimensions in Inches								
	A	B	C	D	E	F	G	H	I
SHE50 100NE	66-3/4	49-1/4	22	15-3/4	3	8	8	62	65

Standard model certified from sea level to 10,100 ft. elevation.

Optional Concentric Vent Kits (100111100) and Condensate Neutralization Kits (100112380).

Substitute "P" for "N" in the model number for LP (Propane) gas model.

# FORCE® 90+ POWER DIRECT VENT



## CONDENSING DESIGN

- Operates at 96% thermal efficiency, which saves money on operating costs compared to a standard 80% efficient gas water heater
- Equipped with condensate drain tee

## HELICAL INTERNAL HEAT EXCHANGER

- Spiral heat exchanger keeps hot combustion gases in the tank longer lengthen the heat transfer cycle
- Positioned in the center of the tank for more even heat distribution

## POWER DIRECT VENT DESIGN

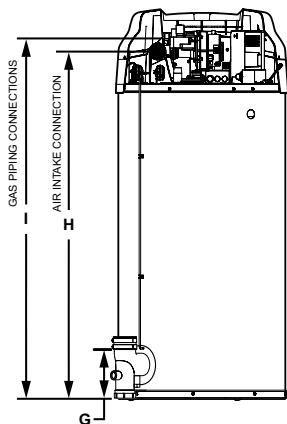
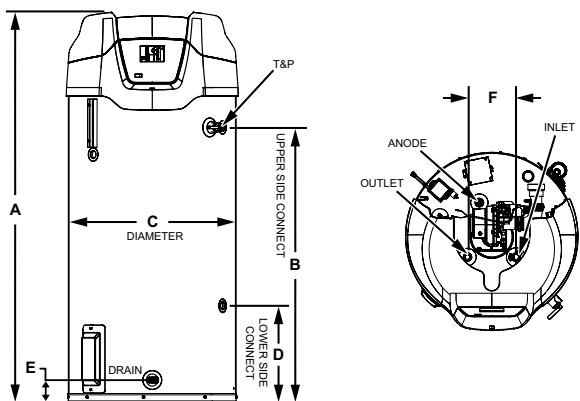
- Combined vertical and horizontal runs terminating through an outside wall. Vents using PVC, CPVC, ABS, or polypropylene.
- 2" pipe, vents up to 45 equivalent feet
- 3" pipe, vents up to 128 equivalent feet

## SIDE-MOUNTED HOT AND COLD RECIRCULATING TAPS

## 3-YEAR LIMITED TANK AND 1-YEAR LIMITED PARTS WARRANTY

- For complete information, consult written warranty or go to [statewaterheaters.com](http://statewaterheaters.com)





Model Number	Gallon Capacity	Recovery Capacity GPH @ 100°F Rise	BTU Input Per Hour	Approx. Shipping Weight (lbs)
SHE75 100NE	75	116	100,000	382

Model Number	Dimensions in Inches								
	A	B	C	D	E	F	G	H	I
SHE75 100NE	65-1/4	45-5/8	27-3/4	16	3-3/4	8	8	57-1/4	59

Standard model certified from sea level to 10,100 ft. elevation.

Optional Concentric Vent Kits (100111100) and Condensate Neutralization Kits (100112380).

Substitute "P" for "N" in the model number for LP (Propane) gas model (example: SHE75 100PE).



# MODULATING ULTRA FORCE®



## HIGH EFFICIENCY MODULATING PRE-MIX POWERED BURNER

- Down-fired pre-mix burner provides optimum efficiency and quiet operation
- Top-mounted burner position prevents condensation from affecting burner operation

## UP TO 98% EFFICIENT

## INTELLIGENT CONTROL SYSTEM WITH TOUCH SCREEN DISPLAY

- Exclusive State designed control system
- Provides detailed water heater status information
- Precise temperature control adjustable from 90 to 180
- Built-in diagnostics
- Run history information
- Ultra Force® water heaters include iCOMM remote connectivity. Models 120-250 require optional Wi-Fi communications kit, models 300-500 come standard with Wi-Fi connectivity.

## SUBMERGED COMBUSTION CHAMBER, WITH HELICAL HEAT EXCHANGER COIL

- Positioned in center of tank, surrounded by water to virtually eliminate radiant heat loss from chamber
- Direct spark ignition
- Spiral heat exchanger keeps hot burner gases swirling, uses centrifugal force to maximize efficiency of heat transfer to water in tank
- Spiral heat exchanger reduces lime scale from forming on water-side surfaces, which maintains energy efficiency over time

## POWERED ANODES STANDARD ON ALL MODELS

- Provides long-lasting tank protection in varying water conditions
- Powered anodes are non-sacrificial
- Automatically adjusts output needed to properly protect the tank

## 3-YEAR LIMITED TANK AND 1-YEAR LIMITED PARTS WARRANTY

- For complete information, consult written warranty or go to [statewaterheaters.com](http://statewaterheaters.com)



Low Lead Content



GAS-FIRED



ASME ANS/NSF-5



Model Number	Approx. Gallon Capacity	Recovery Capacity	Input BTU/Hr	Approx. Shipping Weight Std	Approx. Shipping Weight ASME
SUF60 120NE(A)	60	138	120,000	460	490
SUF100 150NE(A)	100	178	150,000	523	553
SUF100 199NE(A)	100	235	199,900	523	553
SUF100 250NE(A)	100	291	250,000	523	553
SUF119 300NE(A)	119	349	300,000	855	855
SUF119 400NE(A)	119	460	399,900	855	855
SUF119 500NE(A)	119	576	499,900	855	855

Change "N" to "P" in model number for propane. "A" in model represents ASME construction.

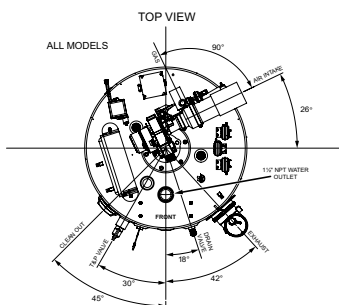
Concentric Vent Kit 100111100 for SUF60-120 through SUF 100-250 Models

Concentric Vent Kit 100113124 for SUF130-300 & SUF130-500 Models.

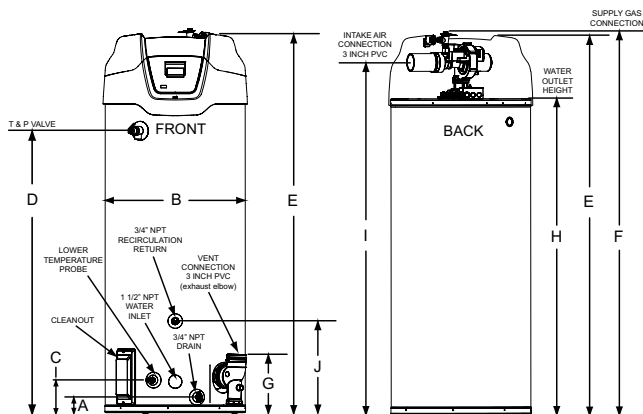
**Dimensions and Line Drawings on the following pages.**

# MODULATING ULTRA FORCE®

(CONTINUED)



\* Center line of water outlet on top of the water heaters is approximately 7 inches from the front edge of the water heater.



Model Number	Dimensions in Inches									
	A	B	C	D	E	F	G	H	I	J
SUF60 120NE(A)	3	27.75	6.3	35	53.5	55.5	11.25	42.25	48.5	18.25
SUF100 150 NE(A)	3	27.75	6.3	56.38	75.75	76	11.25	64	70	18.25
SUF100 199NE(A)	3	27.75	6.3	56.38	75.75	76	11.25	64	70	18.25
SUF100 250NE(A)	3	27.75	6.3	56.38	75.75	76	11.25	64	70	18.25

Electrical characteristics - 120V - 60Hz A.C., 5.0A

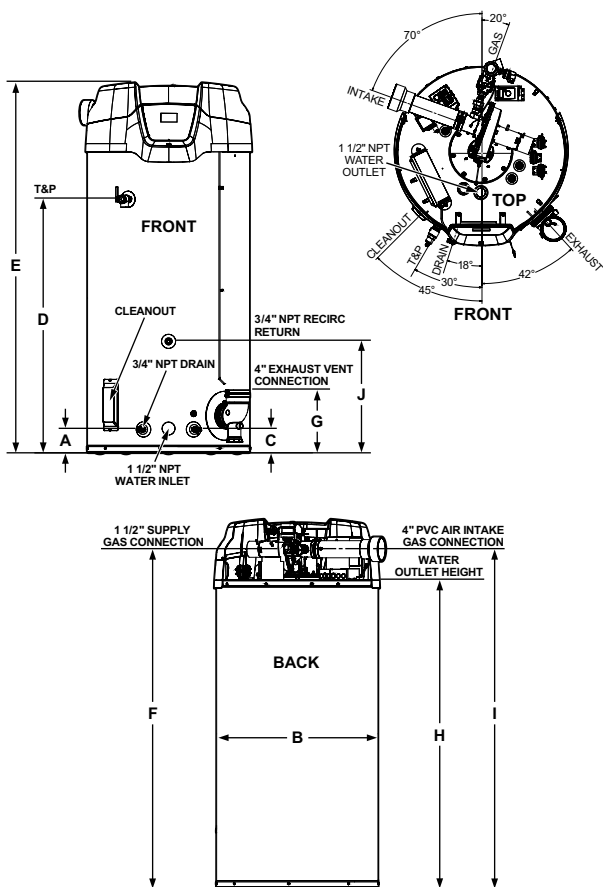
Change "N" to "P" in model number for propane (Example: SUF119 300PE).

"A" in model represents ASME construction.

Concentric Vent Kit 100111100 for SUF60-120 through SUF100-250 Models

Concentric Vent Kit 100113124 for SUF119-300 & SUF119-500 Models.

Models are certified from sea level to 10,100 ft. elevation.



Model Number	Dimensions in Inches									
	A	B	C	D	E	F	G	H	I	J
SUF119 300NE(A)	4.75	33.12	4.75	52	75.75	73.75	12.75	63.13	69.25	23
SUF119 400NE(A)	4.75	33.12	4.75	52	75.75	73.75	12.75	63.13	69.25	23
SUF119 500NE(A)	4.75	33.12	4.75	52	75.75	73.75	12.75	63.13	69.25	23

Electrical characteristics - 120V - 60Hz A.C., 5.0A

Change "N" to "P" in model number for propane (Example: SUF119 300PE).

"A" in model represents ASME construction.

Concentric Vent Kit 100111100 for SUF60-120 through SUF100-250 Models

Concentric Vent Kit 100113124 for SUF119-300 & SUF119-500 Models.

Models are certified from sea level to 10,100 ft. elevation.

# ULTRA FORCE™ XL



## EXTENDS ULTRA FORCE CONDENSING PRODUCTS TO 1,000,000 BTU/H

- High efficiency, condensing water heaters with modulating burner to 1,000,000 Btu/h
- Primary and secondary heat exchangers keep hot combustion gases in the tank longer to extract more heat into the water
- Models from 750,000 to 1,000,000 Btu/h deliver thermal efficiencies of 97%, saving money on operating costs
- PermaGlas® glass-lining provides superior protection against corrosion for the ASME-certified tank and primary heat exchanger

## ELECTRONIC CONTROL & DISPLAY

- iCOMM™ connectivity platform provides diagnostic and operational information
- Integrated color touch display/control system is standard on all models
- Precise temperature control, adjustable from 90° F to 180° F
- Remote monitoring, diagnostic fault notifications, and control of the set point and differential via the free State mobile app

## PRIMARY AND SECONDARY HEAT EXCHANGERS

- Glass-lined 304L stainless steel primary HX positioned in center of tank, surrounded by water, to virtually eliminate radiant heat loss from chamber
- Secondary HX (where condensing process occurs) constructed of type 316L stainless steel for additional corrosion resistance
- 2-step heat transfer process between primary and secondary HX maximizes heat transfer, creating thermal efficiency of 97%

## POWER ANODES STANDARD ON ALL MODELS

- Provides long-lasting tank protection in varying water conditions
- Non-sacrificial powered anodes prevent lime scale from forming on water-side surfaces, which maintains energy efficiency over time
- Automatically adjusts output needed to properly protect the tank

## 5-YEAR LIMITED TANK AND 1-YEAR LIMITED PARTS WARRANTY

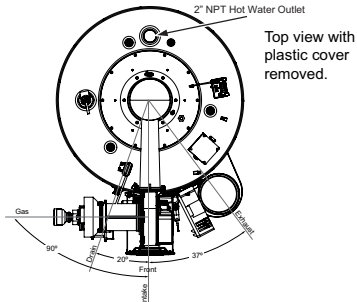
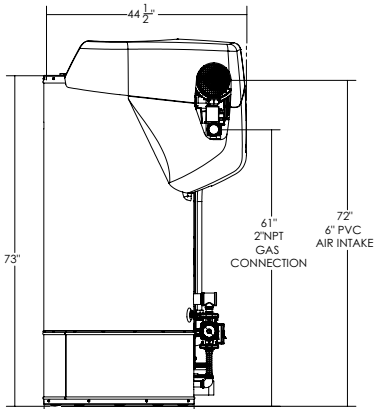
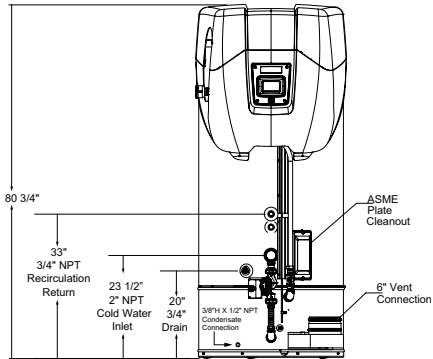
- For complete information, consult written warranty or go to [statewaterheaters.com](http://statewaterheaters.com)

Model Number	Gallon Capacity	Recovery Capacity	Input BTU/HR	Approx. Shipping Weight (lbs) ASME
SUS-120-750A	120	882	750,000	1,300
SUS-120-1000A	120	1,176	1,000,000	1,300

Electrical characteristics - 120V-60 Hz A.C., 5.0A

"A" in model number represents ASME construction.

Models are certified from sea level to 10,100 ft. elevation.



# MODULATING ULTRA FORCE™ LV



## LARGE VOLUME TANK + CONDENSING DESIGN

- Large volume, integrated storage capacity to 250-gallons eliminates need for multiple water heaters or separate storage tank, saving space and install cost
- Helical internal heat exchanger keeps hot combustion gases in the tank longer to extract more heat into the water
- Models from 150,000 to 500,000 Btu/h deliver thermal efficiencies to 96%, saving money on operating costs
- PermaGlas® glass-lining process provides superior protection against corrosion for the large volume, ASME-certified storage tank

## ELECTRONIC CONTROL & DISPLAY

- iCOMM™ connectivity platform provides diagnostic and operational information
- Integrated color touch display/control system is standard on all models
- Precise temperature control, adjustable from 90° F to 180° F
- Remote monitoring, diagnostic fault notifications, and control of the set point and differential via the free State mobile app

## SUBMERGED COMBUSTION CHAMBER WITH HELICAL HEAT EXCHANGER COIL

- Positioned in center of tank, surrounded by water to virtually eliminate radiant heat loss from chamber
- Direct spark ignition
- Spiral heat exchanger keeps hot burner gases swirling, uses centrifugal force to maximize efficiency of heat transfer to water in tank
- Spiral heat exchanger reduces lime scale from forming on water-side surfaces, which maintains energy efficiency over time

## POWER ANODES STANDARD ON ALL MODELS

- Provides long-lasting tank protection in varying water conditions
- Powered anodes are non-sacrificial
- Automatically adjusts output needed to properly protect the tank

## 5-YEAR LIMITED TANK AND 1-YEAR LIMITED PARTS WARRANTY

- For complete information, consult written warranty or go to [statewaterheaters.com](http://statewaterheaters.com)



ASME

(All models except SUFL-220-500A)





Model Number	Gallon Capacity	Recovery Capacity	Input BTU/HR	Approx. Shipping Weight (lbs) ASME
SUFL-250-150A	250	175	150,000	1125
SUFL-250-199A	250	230	199,900	1125
SUFL-250-250A	250	285	250,000	1125
SUFL-220-300A	220	342	300,000	1420
SUFL-220-400A	220	451	399,900	1420
SUFL-220-500A	220	557	499,900	1420

"A" in model number represents ASME construction.

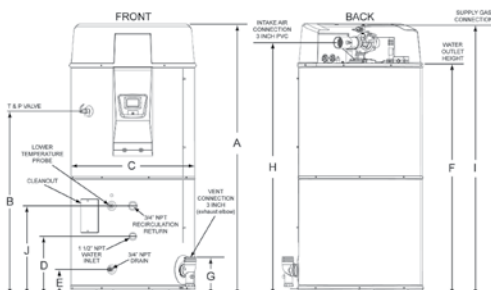
Models are certified from sea level to 10,100 ft. elevation.



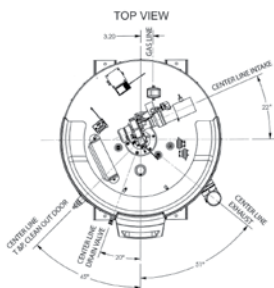
# MODULATING ULTRA FORCE™ LV

(CONTINUED)

## SUFL-250-150A — SUFL-250-250A



These designs comply with the current edition of the American National Standard for Gas Water Heaters, Volume III, ANSI Z21.10.3 / CSA 4.3 as an automatic circulating tank water heater, and automatic storage water heaters.



\* Center line of water outlet on top of the water heaters is approximately 13 inches from the front edge of the water heater.

Figure 5. Rough-In Dimensions

Model Number	Dimensions				
	A	B	C	D	E
SUFL-250-150A	91-1/2	62-5/8	42-1/8	20-1/2	8-1/2
SUFL-250-199A	91-1/2	62-5/8	42-1/8	20-1/2	8-1/2
SUFL-250-250A	91-1/2	62-5/8	42-1/8	20-1/2	8-1/2

Model Number	Dimensions				
	F	G	H	I	J
SUFL-250-150A	78-1/8	12	85	90-1/8	30-1/2
SUFL-250-199A	78-1/8	12	85	90-1/8	30-1/2
SUFL-250-250A	78-1/8	12	85	90-1/8	30-1/2

Optional Concentric Vent Kits available. 100111100 (SUFL-250-150A through SUFL-250-250A models).

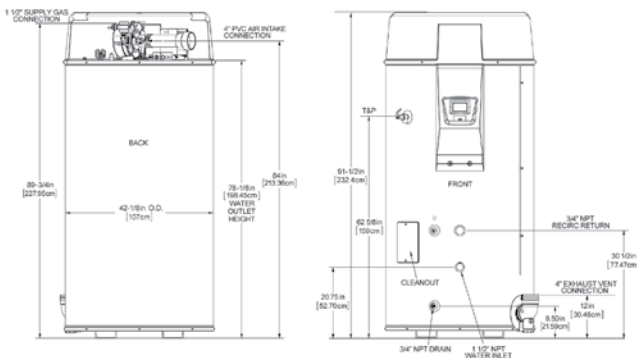
Optional Condensate Neutralization Kits available. 100112380 (SUFL-250-150A through SUFL-250-199A models), 100112381 (SUFL-250-250A through SUFL-220-500A models).

Electrical characteristics - 120V-60 Hz A.C., 5.0A

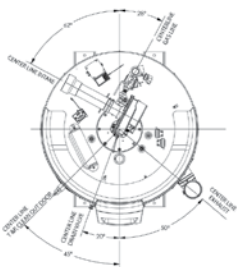
"A" in model number represents ASME construction.

Models are certified from sea level to 10,100 ft. elevation.

## SUFL-220-300A — SUFL-220-500A



TOP VIEW



Model Number	Dimensions				
	A	B	C	D	E
SUFL-220-300A	91-1/2	62-5/8	42-1/8	20-3/4	8-1/2
SUFL-220-400A	91-1/2	62-5/8	42-1/8	20-3/4	8-1/2
SUFL-220-500A	91-1/2	62-5/8	42-1/8	20-3/4	8-1/2

Model Number	Dimensions				
	F	G	H	I	J
SUFL-220-300A	78-1/8	12	84	89-3/4	30-1/2
SUFL-220-400A	78-1/8	12	84	89-3/4	30-1/2
SUFL-220-500A	78-1/8	12	84	89-3/4	30-1/2

Optional Concentric Vent Kits available. 100113124 (SUFL-220-300A through SUFL-220-500A models).

Optional Condensate Neutralization Kits available. 100112381 (SUFL-250-150A through SUFL-220-500A models).

Electrical characteristics - 120V-60 Hz A.C., 5.0A

"A" in model number represents ASME construction.

Models are certified from sea level to 10,100 ft. elevation.

# SANDBLASTER® ULTRA-LOW NO<sub>x</sub>



## 80% THERMAL EFFICIENCY MEANS LOWER OPERATING COSTS

### FAN ASSISTED COMBUSTION

- The blower is built into the low NO<sub>x</sub> burner assembly
- Complies with California SCAQMD Rule 1146.2 and other Air Quality Management Districts with similar NO<sub>x</sub> emission requirements of 14 ng/J or 20 ppm

### AIR-FLAPPER

- A stainless steel air flapper is used inside the premix system to replace externally mounted flue damper to minimize the standby heat loss and to minimize the overall heater height

### METAL VENTING

- Rated Category I Appliance. Uses standard double wall type "B" vent
- Can be commonly vented with other Category I appliances
- Vent connects directly to the vent connector outlet
- An excellent choice for retrofit and upgrade installations

### 3-YEAR LIMITED TANK AND 1-YEAR LIMITED PARTS WARRANTY

- For complete warranty information, consult written warranty or go to [statewaterheaters.com](http://statewaterheaters.com)

GAS-FIRED



LISTED



Low Lead Content



**AHR** CERTIFIED®  
[www.ahrdirectory.org](http://www.ahrdirectory.org)



Model Number	Gallon Capacity	Input BTU/HR	Recovery Capacity GPH @ 100°F Rise
SBL81 120NE	81	120,000	115
SBL81 154NE	81	154,000	148
SBL81 180NE	81	180,000	173
SBL81 199NE	81	199,000	191
SBL100 199NE	100	199,000	191
SBL100 250NE	100	250,000	240
SBL100 275NE	100	275,000	264
SBL86 310NE	86	310,000	298
SBL86 366NE	86	366,000	352
SBL86 390NE	86	390,000	375
SBL100 250NEA	100	250,000	240
SBL100 275NEA	100	275,000	264
SBL86 310NEA	86	310,000	298
SBL86 366NEA	86	366,000	352
SBL86 390NEA	86	390,000	375

Electrical characteristics-120V-60 Hz A. C., 5.0A.

"A" after the model number designates ASME construction.

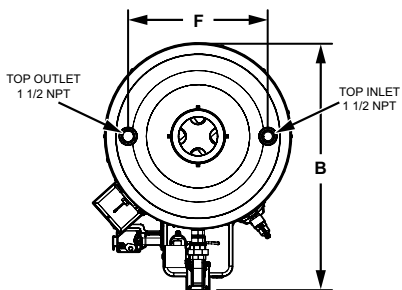
Leg kits for UL sanitation to meet NSF-5 (increase overall height by 4").

SBL models not available in LP gas.

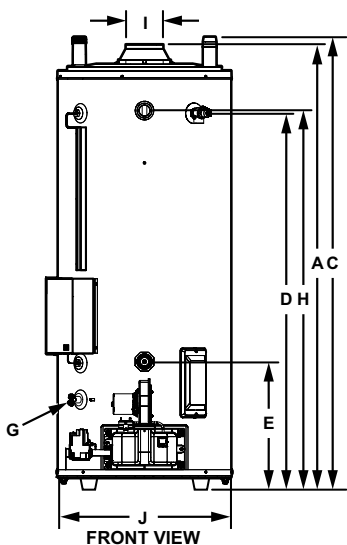
**Dimensions and line drawings on the following pages.**

# SANDBLASTER® ULTRA-LOW NO<sub>x</sub>

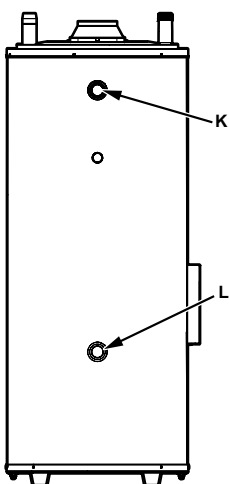
(CONTINUED)



TOP VIEW



FRONT VIEW



BACK VIEW

Model Dimension	SBL81 120, 154, 180, 198	SBL100 199, 250(A), 275(A)	SBL86 310(A), 366(A), 400(A)
	Dimensions in Inches		
A	63-3/4	71-3/4	71-3/4
B	37	37	37
C	65	73	73
D	52-3/4	60-3/4	60-3/4
E	20-3/4	20-1/2	20-1/2
F	21	21	21
G	3/4 NPT		
H	53	61	61
I	6	6-8	6-8
J	27-3/4	27-3/4	27-3/4
K	1-1/2 NPT		
L	1-1/2 NPT		
Approx. Shipping Weight (lbs)	SBL81 120, 154, 180, 198	SBL100 199, 250(A), 275(A)	SBL86 310(A), 366(A), 400(A)
Standard	650	750	810
ASME	N/A	800	860

Electrical characteristics-120V-60 Hz A. C., 5.0A.

"A" after the model number designates ASME construction.

Leg kits for UL sanitation to meet NSF-5 (increase overall height by 4").

SBL models not available in LP gas.

# POLARIS™ HIGH EFFICIENCY



## CONDENSING DESIGN

- Operates at up to 96% thermal efficiency which saves money on operating costs compared to a standard 80% efficient gas water heater
- Helical internal heat exchanger keeps hot combustion gases in the tank longer to extract more heat into the water

## STAINLESS STEEL CONSTRUCTION

- Tank and helical heat exchanger are constructed from 444 stainless steel for excellent corrosion resistance without the need for an anode

## WHISPER QUIET OPERATION

- Ultra-quiet blower and burner minimize noise

## POWER DIRECT VENT DESIGN

- Direct vent using PVC, CPVC or ABS either thru-the-wall or thru-the-roof

## OPTIONAL CONCENTRIC VENT KIT

## ADVANCED ELECTRONIC CONTROL

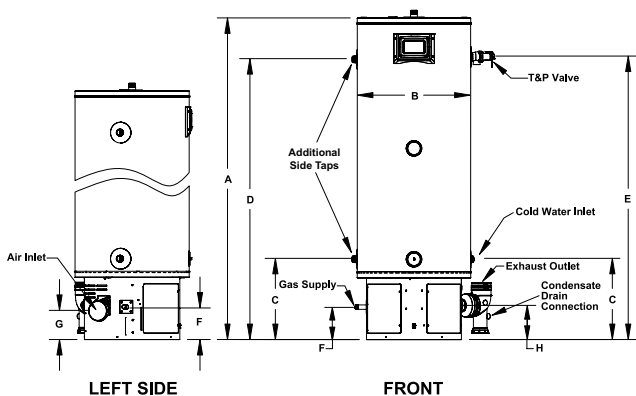
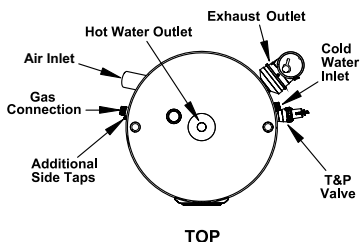
- Large LCD display provides precise temperature control and advanced diagnostics

## CODE COMPLIANCE

- Complies with SCAQMD Rule 1146.2 and other air quality management districts with similar requirements for Ultra-Low NOx emissions requirements of 14 ng/J or 20 PPM
- Meets UBC, CEC, and ICC National Codes
- Meets the thermal efficiency and standby loss requirements of the U. S. Department of Energy and current edition of ASHRAE/IES 90.1

## 3-YEAR LIMITED TANK AND 1-YEAR LIMITED PARTS WARRANTY

- For complete information, consult written warranty or go to [statewaterheaters.com](http://statewaterheaters.com)



Model Number	Gallon Capacity	BTU/h Input Gallon Per Hour	Thermal Efficiency	Recovery Capacity GPH @ 100°F Rise	Approx. Shipping Weight (lbs)
SPC-34-130 NE	34	130,000	96%	149	150
SPC-34-150 NE	34	150,000	94%	171	150
SPC-50-130 NE	50	130,000	95%	149	176
SPC-50-150 NE	50	150,000	95%	171	180
SPC-50-175 NE	50	175,000	96%	200	180
SPC-50-199 NE	50	199,000	96%	227	180

Model Number	Dimensions in Inches		Vent Connection	1" Water Connections		T&P	Gas Supply*	Approx. Shipping Weight (lbs)
	A	B		C	D			
SPC-34-130 NE	48-1/2	22	2 or 3	15-3/4	40-1/2	41	6-3/8	150
SPC-34-150 NE	48-1/2	22	2 or 3	15-3/4	40-1/2	41	6-3/8	150
SPC-50-130 NE	62-3/8	22	2 or 3	15-3/4	54-1/2	55	6-3/8	176
SPC-50-150 NE	63-3/4	22	2 or 3	15-3/4	55-3/4	56-1/4	6-3/8	180
SPC-50-175 NE	63-3/4	22	3	15-3/4	55-3/4	56-1/4	6-3/8	180
SPC-50-199 NE	63-3/4	22	3	15-3/4	55-3/4	56-1/4	6-3/8	180

For Propane (LP) gas change "NE" to "PE"  
Models certified for sea level to 7,700 ft. elevation.



# SANDBLASTER® LOW NOx SINGLE FLUE



## CODE COMPLIANCE

- The Ultra-Low NOx atmospheric vent commercial gas water heater which meets the thermal efficiency and standby loss requirements of the U.S. Department of Energy and Current Edition ASHRAE/IES 90.1

## FULLY AUTOMATIC CONTROLS WITH SAFETY SHUTOFF

- Accurate, dependable control system requires no electric connections. Fixed automatic gas shutoff device for added safety. Not recommended for 180°F sanitizing.

## HEAVY GAUGE STEEL JACKET

- Finished with baked enamel over bonderized undercoat

## FOAM INSULATION

- Saves fuel, helps reduce standby heat loss

## ULTRA-LOW NOx EMISSIONS

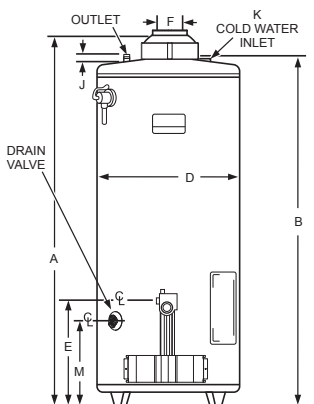
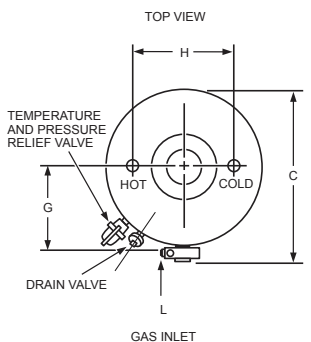
- Complies with SCAQMD Rule 1146.2 and other Air Quality Management Districts with similar requirements of 14 ng/J or 20 ppm

## EASY-TO-INSTALL

- Completely factory-assembled. Only gas, water and vent connections need to be made. All connections are located in front and top of heaters for ease-of-installation and service.

## 3-YEAR LIMITED TANK AND 1-YEAR LIMITED PARTS WARRANTY

- For complete warranty information, consult written warranty or go to [statewaterheaters.com](http://statewaterheaters.com)



Model Number	Gallon Capacity	Input BTU/HR	Recovery Capacity GPH @ 100° Rise	Approx. Shipping Weight (lbs)
SBL75 76NE**	74	75,100 BTU/h	73	285
SBL100 76NE*	98	75,100 BTU/h	74	350

Model Number	Dimensions in Inches					
	A	B	C	D	E	F
SBL75 76NE	62-1/16	58	29-1/2	25-1/4	15-7/8	4
SBL100 76NE	70-1/2	66-1/2	30-15/16	27-3/4	15-3/16	4

Model Number	Dimensions in Inches					
	G	H	J	K	L	M
SBL75 76NE	15-1/4	16	2	1	1/2	12-1/2
SBL100 76NE	15-3/4	16	1-1/4	1-1/4	1/2	11-15/16

Available in natural gas only.

\*Recovery rating based on 81% thermal efficiency

\*\*Recovery rating based on 80% thermal efficiency





State Water Heaters | 500 Tennessee Waltz Parkway | Ashland City, TN 37015

800.527.1953 | [statewaterheaters.com](http://statewaterheaters.com)

SMBCA00118 | September | ©2020 State Water Heaters | Printed in U.S.A.