



# COMMERCIAL-GRADE

## RESIDENTIAL GAS WATER HEATERS

### PROLINE® XE POWER DIRECT VENT

The ProLine® XE Power Direct Vent water heaters have been engineered to maximize efficiency and deliver a greater Uniform Energy Factor (UEF).

#### POWER DIRECT VENT DESIGN

- Combined horizontal and vertical vent runs up to 180 equivalent feet with 4" diameter venting (ABS, PVC, CPVC and polypropylene)
- Two-pipe sealed combustion system uses outside air, eliminating problems caused by insufficient indoor ventilation
- Reduced NOx emissions comply with air quality management district regulations
- Built-in heat traps on the water inlet and outlet reduce the amount of heat lost through piping
- "Environmentally-Friendly" foam insulation reduces the amount of heat loss and contributes to overall energy efficiency

#### SELF-CLEANING DIP TUBE

- Helps reduce lime and sediment buildup and maximizes hot water output. Made from long-lasting PEX cross-linked polymer.

#### HOT-SURFACE IGNITOR

- More robust and reliable than standing pilot, and reduces energy consumption.

#### BLUE DIAMOND® GLASS COATING

- Provides superior corrosion resistance compared to the industry-standard glasslining.

#### USER-FRIENDLY

- State-of-the-art electronic gas control provides more precise temperature control

- LED control light displays operation status and diagnostics information
- Built-in heat traps on the water inlet and outlet reduce the amount of heat lost through piping

#### ENHANCED-FLOW BRASS DRAIN VALVE

- Our residential water heaters have a solid brass, tamper resistant, enhanced-flow, ball type, drain valve.
- Uses a standard female hose fitting that allows for fast and easy draining during maintenance.
- Designed for easy operation, this valve includes an integral screwdriver slot that features a ¼ turn (open/close) radius, which not only permits full straight-through water flow but also a quick and positive shut off.

#### CSA CERTIFIED AND ASME RATED T&P RELIEF VALVE

#### DESIGN-CERTIFIED BY CSA INTERNATIONAL

- Certified at 150 psi working pressure.
- Certified to ANSI Z21.10.1-CSA 4.1 or ANSI Z21.10.3-CSA 4.3 standards governing storage tank-type water heaters.

#### AVAILABLE IN NATURAL GAS AND PROPANE

#### 6-YEAR LIMITED TANK AND PARTS WARRANTY



# SOLID. STATE.



# COMMERCIAL-GRADE

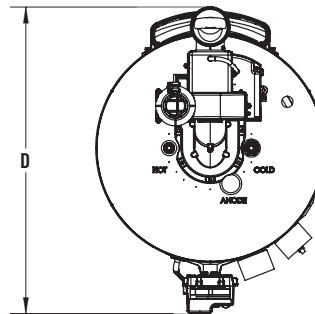
## RESIDENTIAL GAS WATER HEATERS

| Model Number    | Series | Nominal Capacity | Rated Storage Volume | First Hour Rating (Gallons) | UEF  | BTU Input Per Hour | Recovery @ 90°F Rise Gallon Per Hour | Dimensions in Inches |        |    |        |    |        |        |        | Approx. Shipping Weight (lb) |
|-----------------|--------|------------------|----------------------|-----------------------------|------|--------------------|--------------------------------------|----------------------|--------|----|--------|----|--------|--------|--------|------------------------------|
|                 |        |                  |                      |                             |      |                    |                                      | A                    | B      | C  | D      | E  | F      | G      | H      |                              |
| GS6 40 YBPDS    | 200    | 40               | 38                   | 74                          | 0.68 | 40,000             | 45                                   | 58-1/4               | 49-5/8 | 22 | 29-7/8 | 11 | 13-1/4 | 42-1/2 | 15-1/4 | 174                          |
| GS6 50 YBPDT    | 200    | 50               | 48                   | 81                          | 0.72 | 45,000             | 50                                   | 67-1/2               | 58-3/4 | 22 | 29-7/8 | 11 | 13-1/4 | 51-3/4 | 15-1/4 | 192                          |
| GS6 50 YRPDTL 5 | 200    | 50               | 48                   | 118                         | 0.73 | 62,000**           | 73                                   | 69                   | 60-1/4 | 22 | 29-7/8 | 11 | 13-1/4 | 52-3/4 | 15-1/4 | 200                          |
| GS6 75 YRPDTL   | 310    | 75               | 72                   | 129                         | 0.68 | 76,000             | 82                                   | 70-5/8               | 61-1/2 | 26 | 33-7/8 | 11 | 13-1/4 | 53     | 15-1/4 | 277                          |

\*Propane model has input of 58,000 BTU/hr.  
 When ordering propane (LP), change "Y" to "H" in the model number (example GS6 40 YBPDSL).  
 For side connect models, add "L" to model number, e.g. GS6-50-YBPDTL.  
 Side connections available on YBPDS and YBPDT models.  
 Side connections are standard on YRPDTL models.  
 Natural gas models cited are series 200/210. Propane models are series 201/211.  
 All models rated for installation at altitudes up to 10,100 ft.

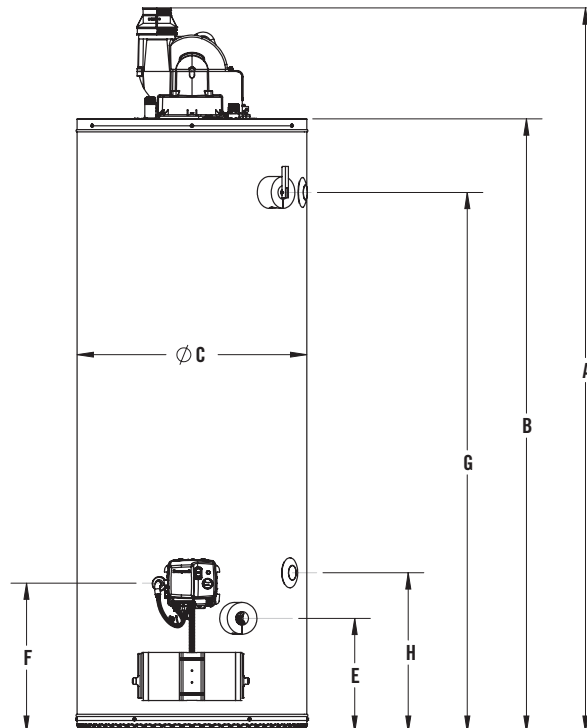
### Vent Length

| Model Number    | Vent Length                 |      |      |
|-----------------|-----------------------------|------|------|
|                 | Maximum Vent Length Eq. Ft. |      |      |
|                 | Ø2"                         | Ø3"  | Ø4"  |
| GS6 40 YBPDS    | 50'                         | 125' | 180' |
| GS6 50 YBPDT    | 50'                         | 125' | 180' |
| GS6 50 YRPDTL 5 | N/A                         | 50'  | 125' |
| GS6 75 YRPDTL 5 | N/A                         | 50'  | 125' |



### Optional Vent Kits

| Description                             | Part Number |
|---|-------------|
| 2" Vent Kit- Coupling, sound suppressor | 100158087   |
| 3" Vent Kit- Coupling, sound suppressor | 100158120   |
| 2" Concentric Vent Kit                  | 100112869   |
| 3" Concentric Vent Kit                  | 100111100   |
| Hi Ambient Kit                          | 100191116   |



FOR MORE INFORMATION CONTACT: STATE WATER HEATERS 500 TENNESSEE WALTZ PARKWAY, ASHLAND CITY, TN 37015 • 800-365-0024 TOLL-FREE USA • STATEWATERHEATERS.COM